

## **F.W. Kent Park Lake Water Testing Procedure**

**April 26, 2021**

**Weekly F.W. Kent Park Lake Watershed Testing under Normal Conditions beginning on Monday of each week we will be testing.**

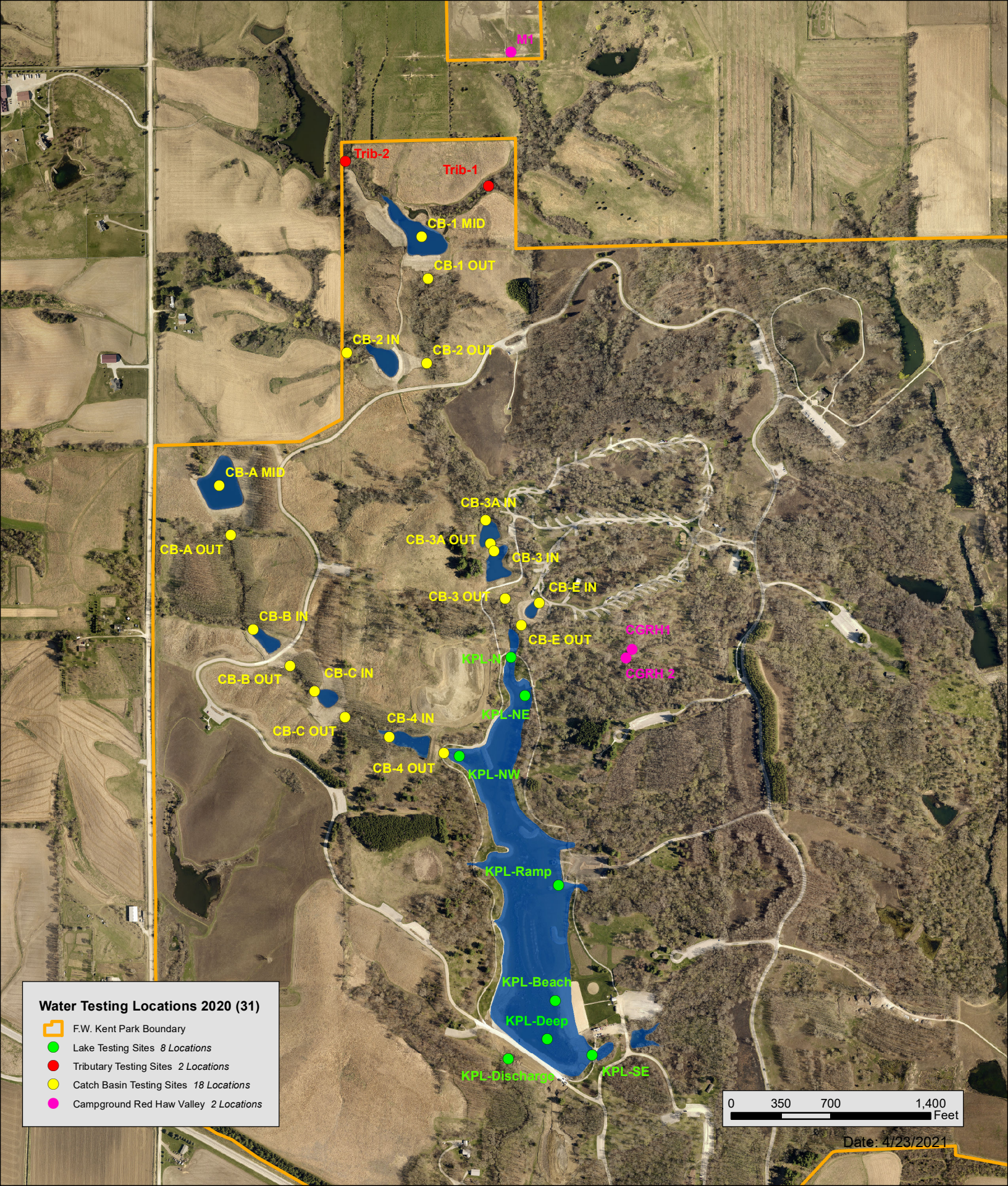
- **All normal parameters at 31 locations.**
- **E. coli bacteria at the following locations.**
  - **Trib-1**
  - **Trib-2**
  - **Outflow of CB-1**
  - **M-1**
  - **CGRH-1**
  - **CGRH-2**
  - **Beach: Once a week on Wednesday or Thursday.**

### **F.W. Kent Park Lake Watershed Testing after Rainfall Events**

**After a 1.25" Rainfall event or greater we will be conducting water testing at:**

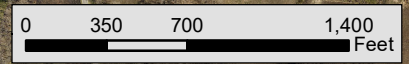
- **All normal parameters at 31 locations.**
- **E. coli bacteria at the following locations.**
  - **Trib-1**
  - **Trib-2**
  - **Outflow of CB-3**
  - **M-1**
  - **CGRH-1**
  - **CGRH-2**

# F.W. Kent Park Water Testing Sites 2021



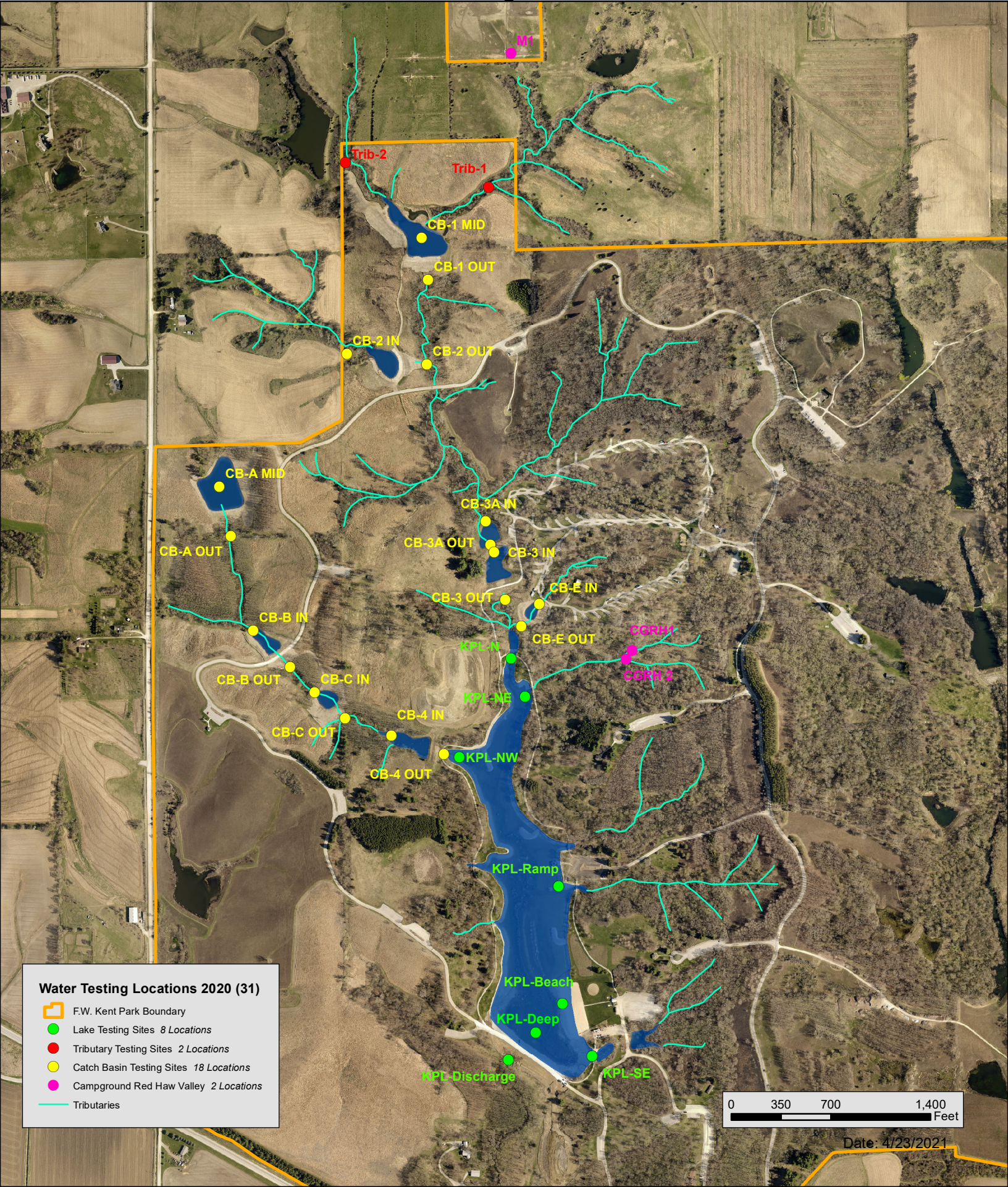
**Water Testing Locations 2020 (31)**

-  F.W. Kent Park Boundary
-  Lake Testing Sites 8 Locations
-  Tributary Testing Sites 2 Locations
-  Catch Basin Testing Sites 18 Locations
-  Campground Red Haw Valley 2 Locations


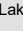
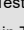

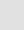



Date: 4/23/2021

# F.W. Kent Park Water Testing Sites 2021

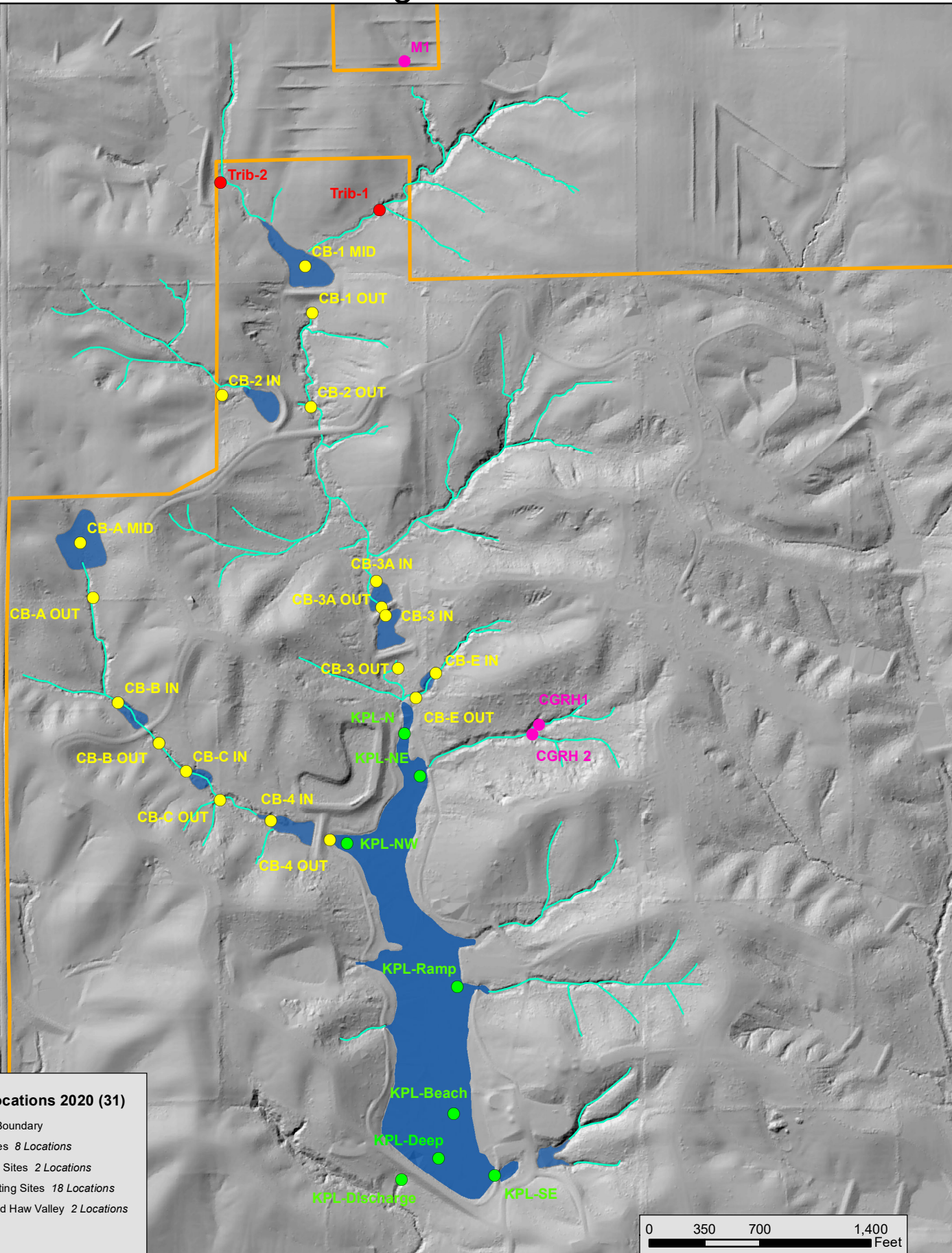


**Water Testing Locations 2020 (31)**

-  F.W. Kent Park Boundary
-  Lake Testing Sites 8 Locations
-  Tributary Testing Sites 2 Locations
-  Catch Basin Testing Sites 18 Locations
-  Campground Red Haw Valley 2 Locations
-  Tributaries

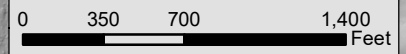


# F.W. Kent Park Water Testing Sites 2021



**Water Testing Locations 2020 (31)**

-  F.W. Kent Park Boundary
-  Lake Testing Sites 8 Locations
-  Tributary Testing Sites 2 Locations
-  Catch Basin Testing Sites 18 Locations
-  Campground Red Haw Valley 2 Locations
-  Tributaries



Date: 4/23/2021

F.W. Kent Park Lake Water Quality Results				Proposed State Standards											
				> 5 mg/L	> 1M	6.5 - 9	Total < 0.9 mg/L		< .035 mg/L	< 35 µg/L					
8/23/2021	Time	Temp (°C)	Temp (°F)	D.O. (mg/L)	Secchi (M)	pH	Nitrate (mg/L)	Nitrite (mg/L)	Phosphate (mg/L)	Phosphate (µg/L)	Ammonia (mg/L)	24-Hour Rainfall (in)	Cloud Cover	Wind Speed (mph)	Air Temp (°F)
KPL-N	9:40 AM	26.4	79.5	4.62	1.87	8.45	0.0	0.0	0.19	190	0.2	0.8	Cloudy	5-15 S	75.0
KPL-NE	9:53 AM	26.6	79.9	7.73	1.72	9.12	0.0	0.0	0.11	110	0.2	0.8	Cloudy	5-15 S	75.0
KPL-NW	10:10 AM	26.6	79.9	6.50	1.66	9.07	0.0	0.0	0.17	170	0.1	0.8	Cloudy	5-15 S	75.0
KPL-Ramp	10:56 AM	26.7	80.1	6.94	1.24	9.02	0.0	0.0	0.17	170	0.2	0.8	Cloudy	5-15 S	75.0
KPL- Beach	10:49 AM	26.3	79.3	7.27	1.12	9.14	0.0	0.0	0.23	230	0.2	0.8	Cloudy	5-15 S	75.0
KPL- SE	10:39 AM	26.2	79.2	4.43	1.52	9.03	0.0	0.0	0.15	150	0.2	0.8	Cloudy	5-15 S	75.0
KPL-Deep	10:26 AM	26.4	79.5	7.22	1.10	9.18	0.0	0.0	0.12	120	0.2	0.8	Cloudy	5-15 S	75.0
KPL-Discharge	No Flowing Water For Sampling														

Campground - Red Haw Valley Water Quality Results				Proposed State Standards											
				> 5 mg/L		6.5 - 9	Total < 0.9 mg/L		< .035 mg/L	< 35 µg/L					
8/23/2021	Time	Temp (°C)	Temp (°F)	D.O. (mg/L)	Transparency Tube (cm)	pH	Nitrate (mg/L)	Nitrite (mg/L)	Phosphate (mg/L)	Phosphate (µg/L)	Ammonia (mg/L)	24-Hour Rainfall (in)	Cloud Cover	Wind Speed (mph)	Air Temp (°F)
CGRH1	1:32 PM	24.1	75.4	4.87	26	7.83	0.0	0.0	1.16	1160	0.3	0.8	Sunny	5-15 S	84.0
CGRH2	No Flowing Water For Sampling														

Main Stem Drainage Water Quality Results				Proposed State Standards											
				> 5 mg/L		6.5 - 9	Total < 0.9 mg/L		< .035 mg/L	< 35 µg/L					
8/23/2021- 8/24/2021	Time	Temp (°C)	Temp (°F)	D.O. (mg/L)	Transparency Tube (cm)	pH	Nitrate (mg/L)	Nitrite (mg/L)	Phosphate (mg/L)	Phosphate (µg/L)	Ammonia (mg/L)	24-Hour Rainfall (in)	Cloud Cover	Wind Speed (mph)	Air Temp (°F)
M-1	No Flowing Water For Sampling														
Trib 1	2:29 PM	26.2	79.2	4.09	13	7.82	5.0	0.0	1.49	1490	0.6	0.8	Sunny	5-15 S	86.0
Trib 2	No Flowing Water For Sampling														
CB-1 MID	8:27 AM	28.1	82.6	4.75	> 62	9.37	0.0	0.0	0.21	210	0.2	0.0	Sunny	5-15 S	73.0
CB-1 OUT	No Flowing Water For Sampling														
CB-2 IN	No Flowing Water For Sampling														
CB-2 OUT	No Flowing Water For Sampling														
CB-3A IN	No Flowing Water For Sampling														
CB-3A OUT	9:22 AM	25.7	78.3	3.13	> 62	7.80	0.0	0.0	0.15	150	0.3	0.0	Sunny	5-15 S	73.0
CB-3 IN	9:46 AM	25.0	77.0	2.37	> 62	7.70	0.0	0.0	0.16	160	0.3	0.0	Sunny	5-15 S	73.0
CB-3 OUT	No Flowing Water For Sampling														
CB-E IN	10:00 AM	27.3	81.1	2.56	> 62	7.73	0.0	0.0	0.16	160	0.3	0.0	Sunny	5-15 S	73.0
CB-E OUT	No Flowing Water For Sampling														

Northwest Drainage Water Quality Results				Proposed State Standards											
				> 5 mg/L		6.5 - 9	Total < 0.9 mg/L		< .035 mg/L	< 35 µg/L					
8/24/2021	Time	Temp (°C)	Temp (°F)	D.O. (mg/L)	Transparency Tube (cm)	pH	Nitrate (mg/L)	Nitrite (mg/L)	Phosphate (mg/L)	Phosphate (µg/L)	Ammonia (mg/L)	24-Hour Rainfall (in)	Cloud Cover	Wind Speed (mph)	Air Temp (°F)
CB-A MID	12:40 PM	31.3	88.3	6.51	> 62	8.99	0.0	0.0	0.14	140	0.2	0.0	Sunny	5-15 S	84.0
CB-A OUT	No Flowing Water For Sampling														
CB-B IN	11:15 AM	27.3	81.1	5.69	> 62	7.82	0.0	0.0	0.18	180	0.2	0.0	Sunny	5-15 S	84.0
CB-B OUT	11:06 AM	24.4	75.9	4.29	>62	7.68	0.0	0.0	0.69	690	0.6	0.0	Sunny	5-15 S	84.0
CB-C IN	1:00 PM	31.3	88.3	4.82	>62	7.99	0.0	0.0	0.16	160	0.3	0.0	Sunny	5-15 S	84.0
CB-C OUT	No Flowing Water For Sampling														
CB-4 IN	1:21 PM	34.0	93.2	5.08	>62	8.68	0.0	0.0	0.22	220	0.2	0.0	Sunny	5-15 S	84.0
CB-4 OUT	10:42 AM	22.5	72.5	4.44	>62	7.09	0.0	0.0	0.51	510	2.0	0.0	Sunny	5-15 S	84.0



Collection Location beach	Collector and Phone gullet larry 319/331-7347	Client Reference larry gullet	Accession # 1814154
OXFORD,	Collected 2021-08-25 11:14	Received 2021-08-25 11:54	Project
Report To	LARRY GULLET JOHNSON CO CONSERVATION BOARD  2048 HWY 6 NW OXFORD, IA 52322		Sample Description surface water
			Sample Type Non-Drinking Water
			Sample Source
			Sample Note(s) 1

**RESULTS OF ANALYSIS - FINAL REPORT**

<u>TEST</u>	<u>RESULT ([MPN]/100mL)</u>	<u>QUANT LIMIT</u>	<u>ANALYSIS NOTE(S)</u>
<i>E.coli</i> Bacteria, SM 9223 B <b>E.coli</b>	<b>31</b>	<b>10</b>	

**SAMPLE AND ANALYSIS NOTES**

1. Upon arrival, sample met container and preservation requirements for the analysis requested. Please review carefully your sample results for additional analyte comments or method exceptions.

**ANALYSIS INFORMATION**

<u>TEST</u>	<u>ANALYZED</u>	<u>SITE</u>	<u>RELEASED</u>	<u>ANALYSIS PREP</u>
1. E.coli Bacteria, SM 9223 B	2021-08-25 15:07 MMK, JAS	3200	2021-08-26 09:23 MMK	

**DESCRIPTION OF UNITS**

[MPN]/100mL = Most Probable Number per 100 Milliliters

**SITE(S) PERFORMING TESTING**

3200 STATE HYGIENIC LABORATORY CORALVILLE, UNIVERSITY OF IOWA RESEARCH PK, 2490 CROSSPARK RD, CORALVILLE, IA 52241; Phone 319/335-4500; Fax 319/335-4555; Michael D. Schueller, M.S., Associate Director; Wade K. Aldous, Ph.D. (D)ABMM, Associate Director; IOWA ENVIRONMENTAL LAB ID #027

The result(s) of this report relate only to the items analyzed. Where the laboratory has not been responsible for the sampling stage the results apply only to the sample as received. This report shall not be reproduced except in full without the written approval of the laboratory. If you have any questions, please call Client Services at 800/421-IOWA (4692) or 319/335-4500.



Collection Location trib 1	Collector and Phone fwkp 319/331-7347	Client Reference larry gullett	Accession # 1814326
OXFORD,	Collected 2021-08-25 12:25	Received 2021-08-25 14:44	Project
Report To  LARRY GULLET JOHNSON CO CONSERVATION BOARD  2048 HWY 6 NW OXFORD, IA 52322	Sample Description surface water		
	Sample Type Non-Drinking Water		
	Sample Source		
	Sample Note(s) 1		

**RESULTS OF ANALYSIS - FINAL REPORT**

<u>TEST</u>	<u>RESULT ([MPN]/100mL)</u>	<u>QUANT LIMIT</u>	<u>ANALYSIS NOTE(S)</u>
<i>E.coli</i> Bacteria, SM 9223 B <b>E.coli</b>	<b>7300</b>	<b>10</b>	

**SAMPLE AND ANALYSIS NOTES**

1. Upon arrival, sample met container and preservation requirements for the analysis requested. Please review carefully your sample results for additional analyte comments or method exceptions.

**ANALYSIS INFORMATION**

<u>TEST</u>	<u>ANALYZED</u>	<u>SITE</u>	<u>RELEASED</u>	<u>ANALYSIS PREP</u>
1. <i>E.coli</i> Bacteria, SM 9223 B	2021-08-25 17:05 CLL, MMK	3200	2021-08-26 11:18 MMK	

**DESCRIPTION OF UNITS**

[MPN]/100mL = Most Probable Number per 100 Milliliters

**SITE(S) PERFORMING TESTING**

3200 STATE HYGIENIC LABORATORY CORALVILLE, UNIVERSITY OF IOWA RESEARCH PK, 2490 CROSSPARK RD, CORALVILLE, IA 52241; Phone 319/335-4500; Fax 319/335-4555; Michael D. Schueller, M.S., Associate Director; Wade K. Aldous, Ph.D. (D)ABMM, Associate Director; IOWA ENVIRONMENTAL LAB ID #027

The result(s) of this report relate only to the items analyzed. Where the laboratory has not been responsible for the sampling stage the results apply only to the sample as received. This report shall not be reproduced except in full without the written approval of the laboratory. If you have any questions, please call Client Services at 800/421-IOWA (4692) or 319/335-4500.



Collection Location cgrh1	Collector and Phone fwkp 319/331-7347	Client Reference larry gullett	Accession # 1814327
OXFORD,	Collected 2021-08-25 13:10	Received 2021-08-25 14:44	Project
Report To	LARRY GULLET JOHNSON CO CONSERVATION BOARD  2048 HWY 6 NW OXFORD, IA 52322		Sample Description surface water
			Sample Type Non-Drinking Water
			Sample Source
			Sample Note(s) 1

RESULTS OF ANALYSIS - FINAL REPORT

TEST	RESULT ([MPN]/100mL)	QUANT LIMIT	ANALYSIS NOTE(S)
<i>E.coli</i> Bacteria, SM 9223 B E.coli	3900	10	

SAMPLE AND ANALYSIS NOTES

1. Upon arrival, sample met container and preservation requirements for the analysis requested. Please review carefully your sample results for additional analyte comments or method exceptions.

ANALYSIS INFORMATION

TEST	ANALYZED	SITE	RELEASED	ANALYSIS PREP
1. E.coli Bacteria, SM 9223 B	2021-08-25 17:05 CLL, MMK	3200	2021-08-26 11:18 MMK	

DESCRIPTION OF UNITS

[MPN]/100mL = Most Probable Number per 100 Milliliters

SITE(S) PERFORMING TESTING

3200 STATE HYGIENIC LABORATORY CORALVILLE, UNIVERSITY OF IOWA RESEARCH PK, 2490 CROSSPARK RD, CORALVILLE, IA 52241; Phone 319/335-4500; Fax 319/335-4555; Michael D. Schueller, M.S., Associate Director; Wade K. Aldous, Ph.D. (D)ABMM, Associate Director; IOWA ENVIRONMENTAL LAB ID #027

The result(s) of this report relate only to the items analyzed. Where the laboratory has not been responsible for the sampling stage the results apply only to the sample as received. This report shall not be reproduced except in full without the written approval of the laboratory. If you have any questions, please call Client Services at 800/421-IOWA (4692) or 319/335-4500.