

F.W. Kent Park Lake Water Testing Procedure

April 26, 2021

Weekly F.W. Kent Park Lake Watershed Testing under Normal Conditions beginning on Monday of each week we will be testing.

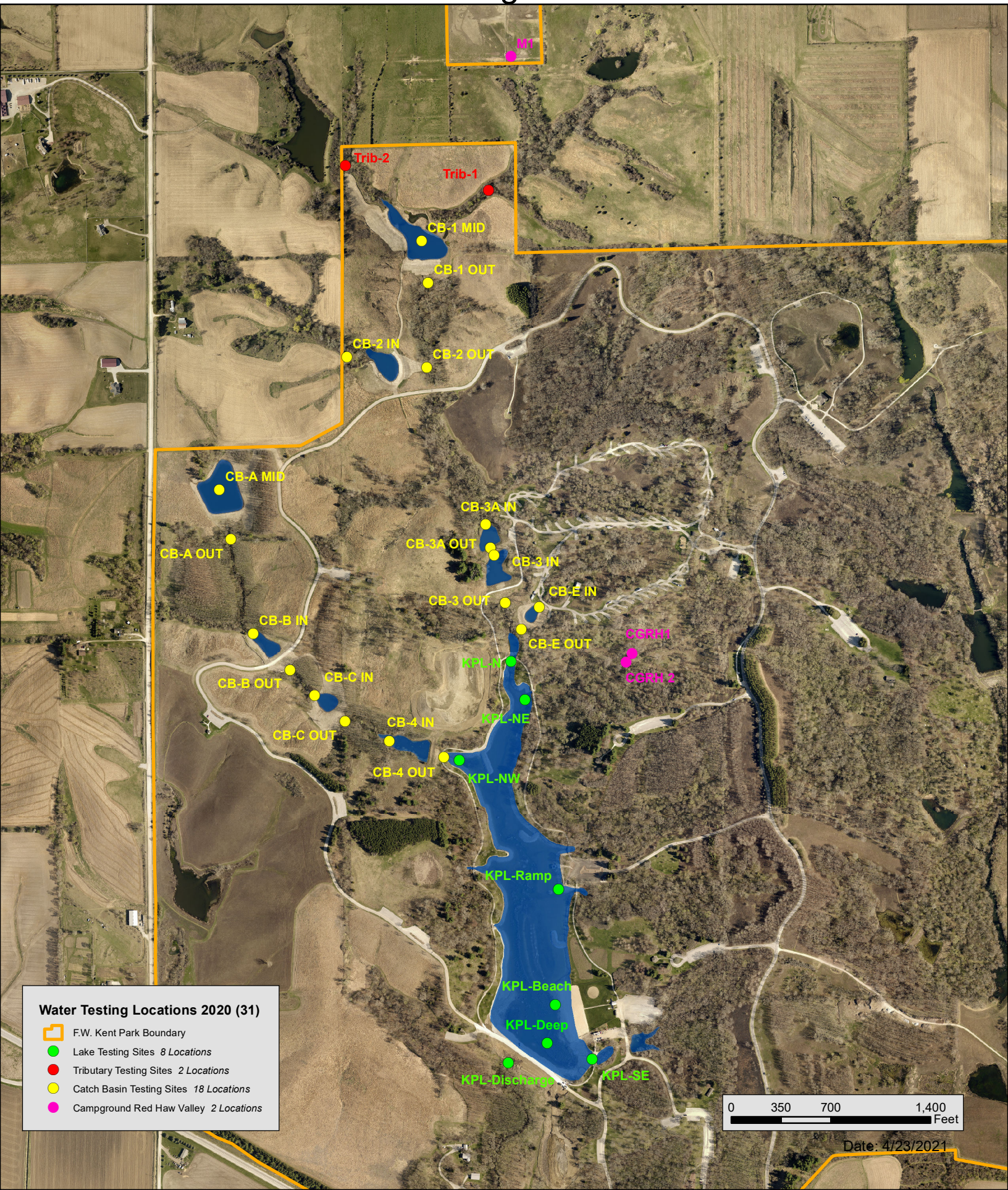
- **All normal parameters at 31 locations.**
- **E. coli bacteria at the following locations.**
 - **Trib-1**
 - **Trib-2**
 - **Outflow of CB-1**
 - **M-1**
 - **CGRH-1**
 - **CGRH-2**
 - **Beach: Once a week on Wednesday or Thursday.**

F.W. Kent Park Lake Watershed Testing after Rainfall Events

After a 1.25" Rainfall event or greater we will be conducting water testing at:

- **All normal parameters at 31 locations.**
- **E. coli bacteria at the following locations.**
 - **Trib-1**
 - **Trib-2**
 - **Outflow of CB-3**
 - **M-1**
 - **CGRH-1**
 - **CGRH-2**

F.W. Kent Park Water Testing Sites 2021



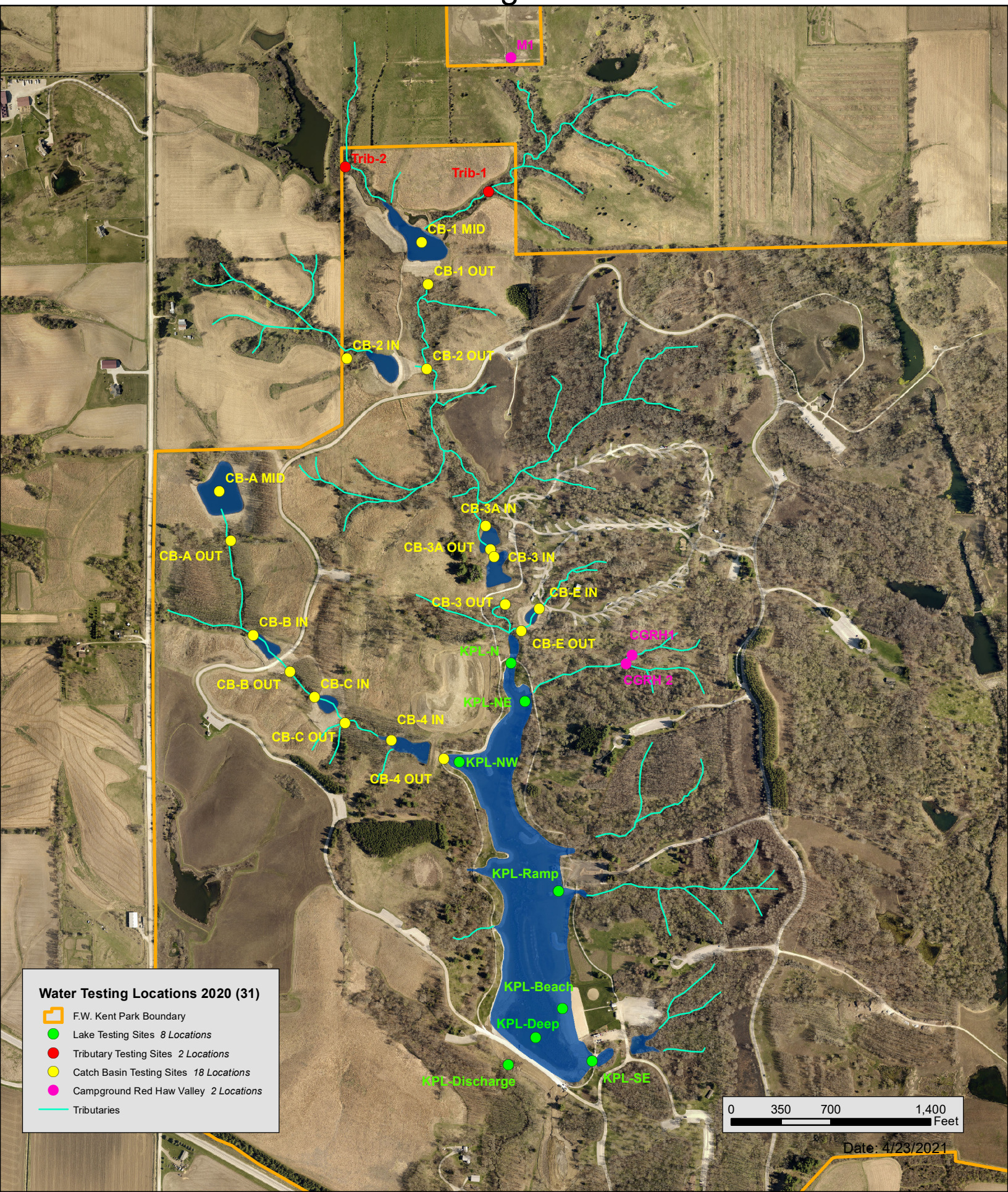
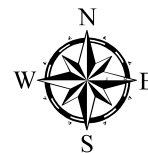
Water Testing Locations 2020 (31)

-  F.W. Kent Park Boundary
-  Lake Testing Sites 8 Locations
-  Tributary Testing Sites 2 Locations
-  Catch Basin Testing Sites 18 Locations
-  Campground Red Haw Valley 2 Locations

0 350 700 1,400
Feet

Date: 4/23/2021

F.W. Kent Park Water Testing Sites 2021



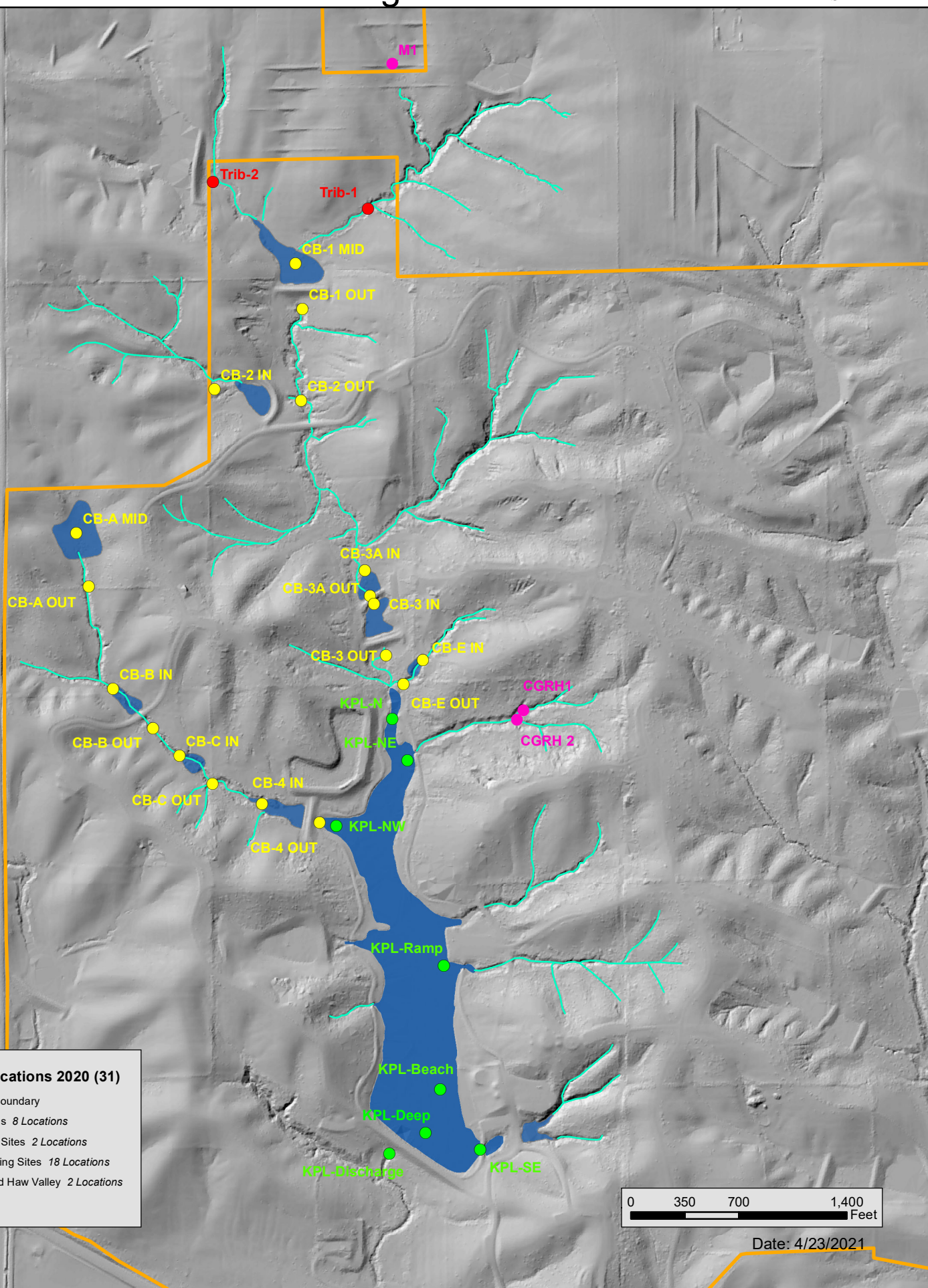
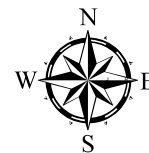
Water Testing Locations 2020 (31)

- F.W. Kent Park Boundary
- Lake Testing Sites 8 Locations
- Tributary Testing Sites 2 Locations
- Catch Basin Testing Sites 18 Locations
- Campground Red Haw Valley 2 Locations
- Tributaries

0 350 700 1,400
Feet

Date: 4/23/2021

F.W. Kent Park Water Testing Sites 2021



Water Testing Locations 2020 (31)

-  F.W. Kent Park Boundary
-  Lake Testing Sites 8 Locations
-  Tributary Testing Sites 2 Locations
-  Catch Basin Testing Sites 18 Locations
-  Campground Red Haw Valley 2 Locations
-  Tributaries

0 350 700 1,400
Feet

Date: 4/23/2021

F.W. Kent Park Lake Water Quality Results				Proposed State Standards											
				> 5 mg/L	> 1M	6.5 - 9	Total < 0.9 mg/L		< .035 mg/L	< 35 µg/L					
9/7/2021	Time	Temp (°C)	Temp (°F)	D.O. (mg/L)	Secchi (M)	pH	Nitrate (mg/L)	Nitrite (mg/L)	Phosphate (mg/L)	Phosphate (µg/L)	Ammonia (mg/L)	24-Hour Rainfall (in)	Cloud Cover	Wind Speed (mph)	Air Temp (°F)
KPL-N	8:05 AM	24.6	76.3	7.31	1.65	8.88	0.0	0.0	0.12	120	0.1	0.0	Cloudy	15-25 NNW	69
KPL-NE	8:16 AM	24.6	76.3	8.29	1.40	8.94	0.0	0.0	0.05	50	0.1	0.0	Cloudy	15-25 NNW	69
KPL-NW	8:26 AM	24.8	76.6	8.44	1.60	9.04	0.0	0.0	0.04	40	0.1	0.0	Cloudy	15-25 NNW	69
KPL-Ramp	9:11 AM	24.6	76.3	6.62	0.95	8.69	0.0	0.0	0.06	60	0.0	0.0	Cloudy	15-25 NNW	69
KPL- Beach	9:02 AM	24.2	75.6	7.09	0.95	8.74	0.0	0.0	0.11	110	0.1	0.0	Cloudy	15-25 NNW	69
KPL- SE	8:53 AM	24.5	76.1	6.12	1.15	8.70	0.0	0.0	0.06	60	0.2	0.0	Cloudy	15-25 NNW	69
KPL-Deep	8:40 AM	24.3	75.7	6.54	0.96	8.67	0.0	0.0	0.12	120	0.1	0.0	Cloudy	15-25 NNW	69
KPL-Discharge	No Flowing Water For Sampling											0.0	Cloudy	15-25 NNW	69

Main Stem Drainage Water Quality Results				Proposed State Standards											
				> 5 mg/L		6.5 - 9	Total < 0.9 mg/L		< .035 mg/L	< 35 µg/L					
9/7/2021- 9/8/2021	Time	Temp (°C)	Temp (°F)	D.O. (mg/L)	Transparency Tube (cm)	pH	Nitrate (mg/L)	Nitrite (mg/L)	Phosphate (mg/L)	Phosphate (µg/L)	Ammonia (mg/L)	24-Hour Rainfall (in)	Cloud Cover	Wind Speed (mph)	Air Temp (°F)
M-1	No Flowing Water For Sampling											0.0	Partly Cloudy	15-25 NW	82
Trib 1	1:20 PM	24.5	76.1	4.59	56	8.01	5.0	0.0	0.14	140	0.2	0.0	Partly Cloudy	15-25 NW	82
Trib 2	12:41 PM	25.2	77.4	3.35	>62	7.37	0.0	0.0	0.22	220	0.1	0.0	Partly Cloudy	15-25 NW	82
CB-1 MID	1:08 PM	28.1	82.6	7.15	>62	9.47	0.0	0.0	0.77	770	0.1	0.0	Partly Cloudy	15-25 NW	82
CB-1 OUT	No Flowing Water For Sampling											0.0	Partly Cloudy	15-25 NW	82
CB-2 IN	No Flowing Water For Sampling											0.0	Partly Cloudy	15-25 NW	82
CB-2 OUT	No Flowing Water For Sampling											0.0	Partly Cloudy	15-25 NW	82
CB-3A IN	No Flowing Water For Sampling											0.0	Sunny	10-15 NW	59
CB-3A OUT	8:11 AM	20.1	68.2	3.23	>62	7.33	0.0	0.0	0.05	50	0.2	0.0	Sunny	10-15 NW	59
CB-3 IN	8:22 AM	19.3	66.7	2.60	>62	7.39	0.0	0.0	0.06	60	0.2	0.0	Sunny	10-15 NW	59
CB-3 OUT	No Flowing Water For Sampling											0.0	Sunny	10-15 NW	59
CB-E IN	8:46 AM	21.1	70.0	3.18	26	7.44	0.0	0.0	0.22	220	0.1	0.0	Sunny	10-15 NW	59
CB-E OUT	No Flowing Water For Sampling											0.0	Sunny	10-15 NW	59

Northwest Drainage Water Quality Results				Proposed State Standards											
				> 5 mg/L		6.5 - 9	Total < 0.9 mg/L		< .035 mg/L	< 35 µg/L					
9/8/2021	Time	Temp (°C)	Temp (°F)	D.O. (mg/L)	Transparency Tube (cm)	pH	Nitrate (mg/L)	Nitrite (mg/L)	Phosphate (mg/L)	Phosphate (µg/L)	Ammonia (mg/L)	24-Hour Rainfall (in)	Cloud Cover	Wind Speed (mph)	Air Temp (°F)
CB-A MID	9:36 AM	23.1	73.6	5.45	>62	8.36	0.0	0.0	0.02	20	0.1	0.0	Sunny	10-15 NW	64
CB-A OUT	No Flowing Water For Sampling											0.0	Sunny	10-15 NW	64
CB-B IN	10:50 AM	23.3	73.9	6.34	>62	7.78	0.0	0.0	0.30	300	0.2	0.0	Sunny	10-15 NW	64
CB-B OUT	10:31 AM	21.3	70.3	5.21	51	7.38	0.0	0.0	0.04	40	0.3	0.0	Sunny	10-15 NW	64
CB-C IN	12:30 PM	24.1	75.4	5.74	>62	7.88	0.0	0.0	0.22	220	0.3	0.0	Sunny	10-15 NW	64
CB-C OUT	No Flowing Water For Sampling											0.0	Sunny	10-15 NW	64
CB-4 IN	12:50 PM	25.5	77.9	5.14	30	7.86	0.0	0.0	0.26	260	0.2	0.0	Sunny	10-15 NW	64
CB-4 OUT	1:10 PM	20.9	69.6	4.41	>62	7.57	0.0	0.0	0.19	190	0.6	0.0	Sunny	10-15 NW	64

Campground - Red Haw Valley Water Quality Results				Proposed State Standards											
				> 5 mg/L		6.5 - 9	Total < 0.9 mg/L		< .035 mg/L	< 35 µg/L					
9/7/2021	Time	Temp (°C)	Temp (°F)	D.O. (mg/L)	Transparency Tube (cm)	pH	Nitrate (mg/L)	Nitrite (mg/L)	Phosphate (mg/L)	Phosphate (µg/L)	Ammonia (mg/L)	24-Hour Rainfall (in)	Cloud Cover	Wind Speed (mph)	Air Temp (°F)
CGRH1	10:50 AM	20.5	68.9	5.55	38	7.95	0.0	0.0	1.07	1070	0.2	0.0	Partly Cloudy	15-25 NW	79
CGRH2	No Flowing Water For Sampling											0.0	Partly Cloudy	15-25 NW	79

Collection Location cgrhi	Collector and Phone gullett larry 319/331-7347	Client Reference larry gullett	Accession # 1837754
	Collected 2021-09-09 09:00	Received 2021-09-09 11:13	Project
Report To	LARRY GULLETT JOHNSON CO CONSERVATION BOARD 2048 HWY 6 NW OXFORD, IA 52322		Sample Description surface water
			Sample Type Non-Drinking Water
			Sample Source
			Sample Note(s) 1

RESULTS OF ANALYSIS - FINAL REPORT

<u>TEST</u>	<u>RESULT ([MPN]/100mL)</u>	<u>QUANT LIMIT</u>	<u>ANALYSIS NOTE(S)</u>
<i>E.coli</i> Bacteria, SM 9223 B E.coli	1500	10	

SAMPLE AND ANALYSIS NOTES

1. Upon arrival, sample met container and preservation requirements for the analysis requested. Please review carefully your sample results for additional analyte comments or method exceptions.

ANALYSIS INFORMATION

<u>TEST</u>	<u>ANALYZED</u>	<u>SITE</u>	<u>RELEASED</u>	<u>ANALYSIS PREP</u>
1. <i>E.coli</i> Bacteria, SM 9223 B	2021-09-09 13:41 MMK, JAS	3200	2021-09-10 08:25 MMK	

DESCRIPTION OF UNITS

[MPN]/100mL = Most Probable Number per 100 Milliliters

SITE(S) PERFORMING TESTING

3200 STATE HYGIENIC LABORATORY CORALVILLE, UNIVERSITY OF IOWA RESEARCH PK, 2490 CROSSPARK RD, CORALVILLE, IA 52241; Phone 319/335-4500; Fax 319/335-4555; Michael D. Schueller, M.S., Associate Director; Wade K. Aldous, Ph.D. (D)ABMM, Associate Director; IOWA ENVIRONMENTAL LAB ID #027

The result(s) of this report relate only to the items analyzed. Where the laboratory has not been responsible for the sampling stage the results apply only to the sample as received. This report shall not be reproduced except in full without the written approval of the laboratory. If you have any questions, please call Client Services at 800/421-IOWA (4692) or 319/335-4500.



Collection Location trib 1 OXFORD,	Collector and Phone gullett larry 319/331-7347	Client Reference larry gullett	Accession # 1837755
	Collected 2021-09-09 09:30	Received 2021-09-09 11:13	Project
Report To LARRY GULLET JOHNSON CO CONSERVATION BOARD 2048 HWY 6 NW OXFORD, IA 52322			Sample Description surface water
			Sample Type Non-Drinking Water
			Sample Source
			Sample Note(s) 1

RESULTS OF ANALYSIS - FINAL REPORT

<u>TEST</u>	<u>RESULT ([MPN]/100mL)</u>	<u>QUANT LIMIT</u>	<u>ANALYSIS NOTE(S)</u>
<i>E.coli</i> Bacteria, SM 9223 B E.coli	1700	10	

SAMPLE AND ANALYSIS NOTES

1. Upon arrival, sample met container and preservation requirements for the analysis requested. Please review carefully your sample results for additional analyte comments or method exceptions.

ANALYSIS INFORMATION

<u>TEST</u>	<u>ANALYZED</u>	<u>SITE</u>	<u>RELEASED</u>	<u>ANALYSIS PREP</u>
1. <i>E.coli</i> Bacteria, SM 9223 B	2021-09-09 13:41 MMK, JAS	3200	2021-09-10 08:25 MMK	

DESCRIPTION OF UNITS

[MPN]/100mL = Most Probable Number per 100 Milliliters

SITE(S) PERFORMING TESTING

3200 STATE HYGIENIC LABORATORY CORALVILLE, UNIVERSITY OF IOWA RESEARCH PK, 2490 CROSSPARK RD, CORALVILLE, IA 52241; Phone 319/335-4500; Fax 319/335-4555; Michael D. Schueller, M.S., Associate Director; Wade K. Aldous, Ph.D. (D)ABMM, Associate Director; IOWA ENVIRONMENTAL LAB ID #027

The result(s) of this report relate only to the items analyzed. Where the laboratory has not been responsible for the sampling stage the results apply only to the sample as received. This report shall not be reproduced except in full without the written approval of the laboratory. If you have any questions, please call Client Services at 800/421-IOWA (4692) or 319/335-4500.

Collection Location trib2 OXFORD,	Collector and Phone gullett larry 319/331-7347	Client Reference larry gullett	Accession # 1837756
	Collected 2021-09-09 09:50	Received 2021-09-09 11:13	Project
Report To LARRY GULLET JOHNSON CO CONSERVATION BOARD 2048 HWY 6 NW OXFORD, IA 52322			Sample Description surface water
			Sample Type Non-Drinking Water
			Sample Source
			Sample Note(s) 1

RESULTS OF ANALYSIS - FINAL REPORT

<u>TEST</u>	<u>RESULT ([MPN]/100mL)</u>	<u>QUANT LIMIT</u>	<u>ANALYSIS NOTE(S)</u>
<i>E.coli</i> Bacteria, SM 9223 B E.coli	20000	10	

SAMPLE AND ANALYSIS NOTES

1. Upon arrival, sample met container and preservation requirements for the analysis requested. Please review carefully your sample results for additional analyte comments or method exceptions.

ANALYSIS INFORMATION

<u>TEST</u>	<u>ANALYZED</u>	<u>SITE</u>	<u>RELEASED</u>	<u>ANALYSIS PREP</u>
1. <i>E.coli</i> Bacteria, SM 9223 B	2021-09-09 13:41 MMK, JAS	3200	2021-09-10 08:25 MMK	

DESCRIPTION OF UNITS

[MPN]/100mL = Most Probable Number per 100 Milliliters

SITE(S) PERFORMING TESTING

3200 STATE HYGIENIC LABORATORY CORALVILLE, UNIVERSITY OF IOWA RESEARCH PK, 2490 CROSSPARK RD, CORALVILLE, IA 52241; Phone 319/335-4500; Fax 319/335-4555; Michael D. Schueller, M.S., Associate Director; Wade K. Aldous, Ph.D. (D)ABMM, Associate Director; IOWA ENVIRONMENTAL LAB ID #027

The result(s) of this report relate only to the items analyzed. Where the laboratory has not been responsible for the sampling stage the results apply only to the sample as received. This report shall not be reproduced except in full without the written approval of the laboratory. If you have any questions, please call Client Services at 800/421-IOWA (4692) or 319/335-4500.