

Phebe Timber

4492 Kansas Ave SW
Iowa City, IA 52240

Overview: Phebe Timber is a 27-acre property that was donated to Johnson County Conservation in 2021. The property is located in south central Johnson County and consists of forested land, with Old Man's Creek running through the parcel.

History: Phebe Timber was donated to JCC by the William's family in 2021. The land had been in the William's family since January 1, 1850, when the property was transferred from the U.S. government by President Zachary Taylor, 12th president of the United States, to Phebe (Williams) Davis. This donation is unique as it is the first donation to JCC representing land from a family that received the property directly from the U.S. government as part of the nation's westward expansion and colonization by Euro-Americans.

Features:

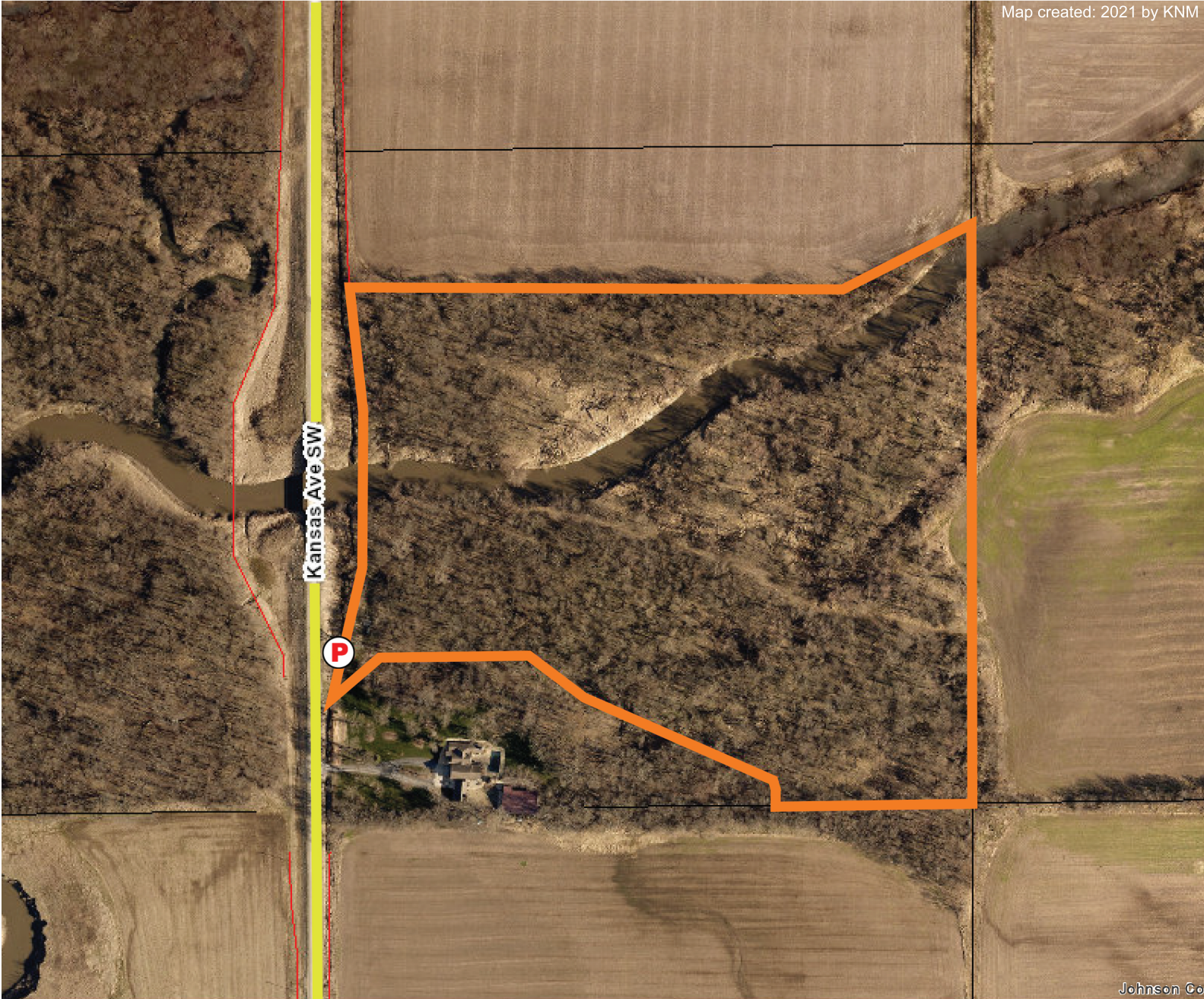
- A total of 24 acres of forest land is found on the property, with high quality bottomland forest ecosystem made up of silver maple, walnut, hackberry, cottonwood, and river birch. A few native hawthorns and oaks remain as reminders of the original oak savanna that once blanketed the county's river valleys.
- Old Man's Creek runs through the property, and the stream channel makes up the remaining 2 acres of the site.
- The property features a diverse array of spring ephemeral wildflowers, including trout lily, prairie trillium, rue anemone, spring beauty, bluebells, violets, and wild ginger, among others.
- This property is adjacent to private land that remains in natural habitat. These lands together create connected habitat and wildlife migration corridors. Stream and river corridors represent most of Iowa's connected wildlife habitat today, and thus, these properties are especially important to protect and preserve.
- A parking area and trails may be developed in the future to make this site more accessible to the people of Johnson County.
- The property is currently open to bow hunting.



Phebe Timber
4492 Kansas Ave SW
Iowa City, IA 52240






Map created: 2021 by KNM



Johnson Co

Legend

-  Property Boundary
-  Road
-  Parking Area

