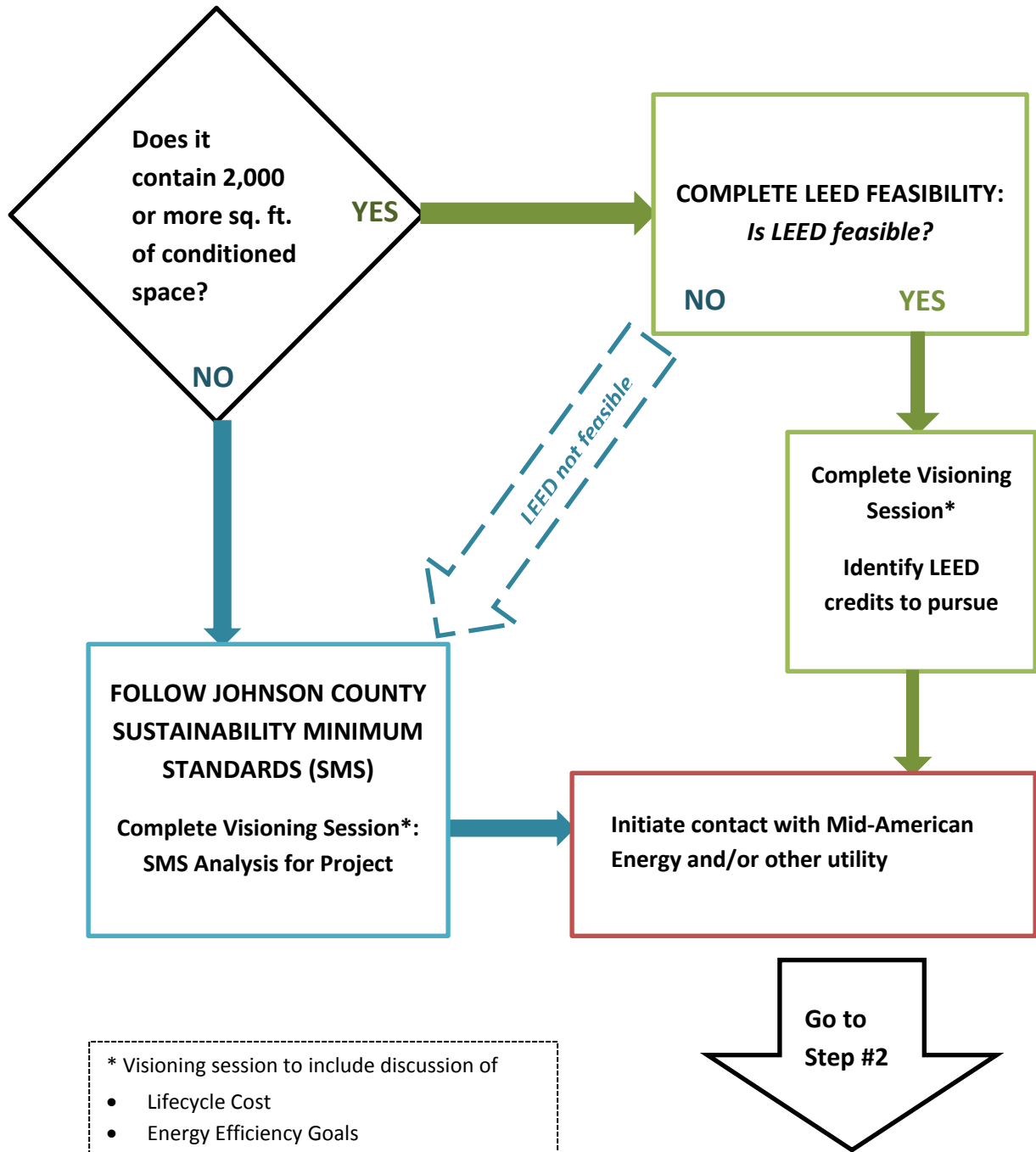


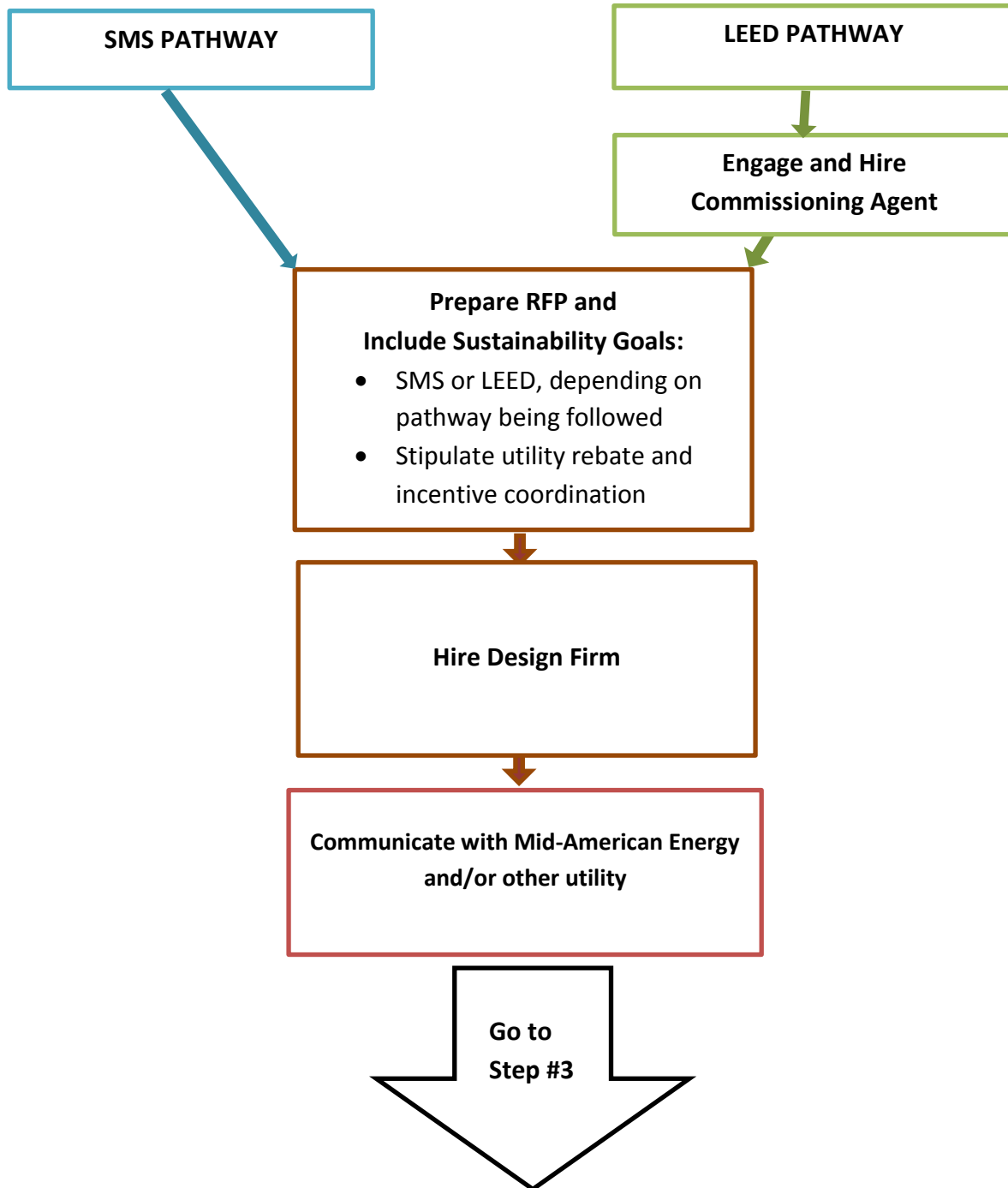
CAPITAL PROJECT STANDARDS PROCESS
USE OF LEADERSHIP IN ENERGY AND ENVIRONMENTAL DESIGN (LEED)
OR
JOHNSON COUNTY SUSTAINABILITY MINIMUM STANDARDS (SMS)

STEP #1 WE ARE ADDING A NEW BUILDING OR DOING A RENOVATION
BOS, Staff, Physical Plant, Green Team, Department(s) involved



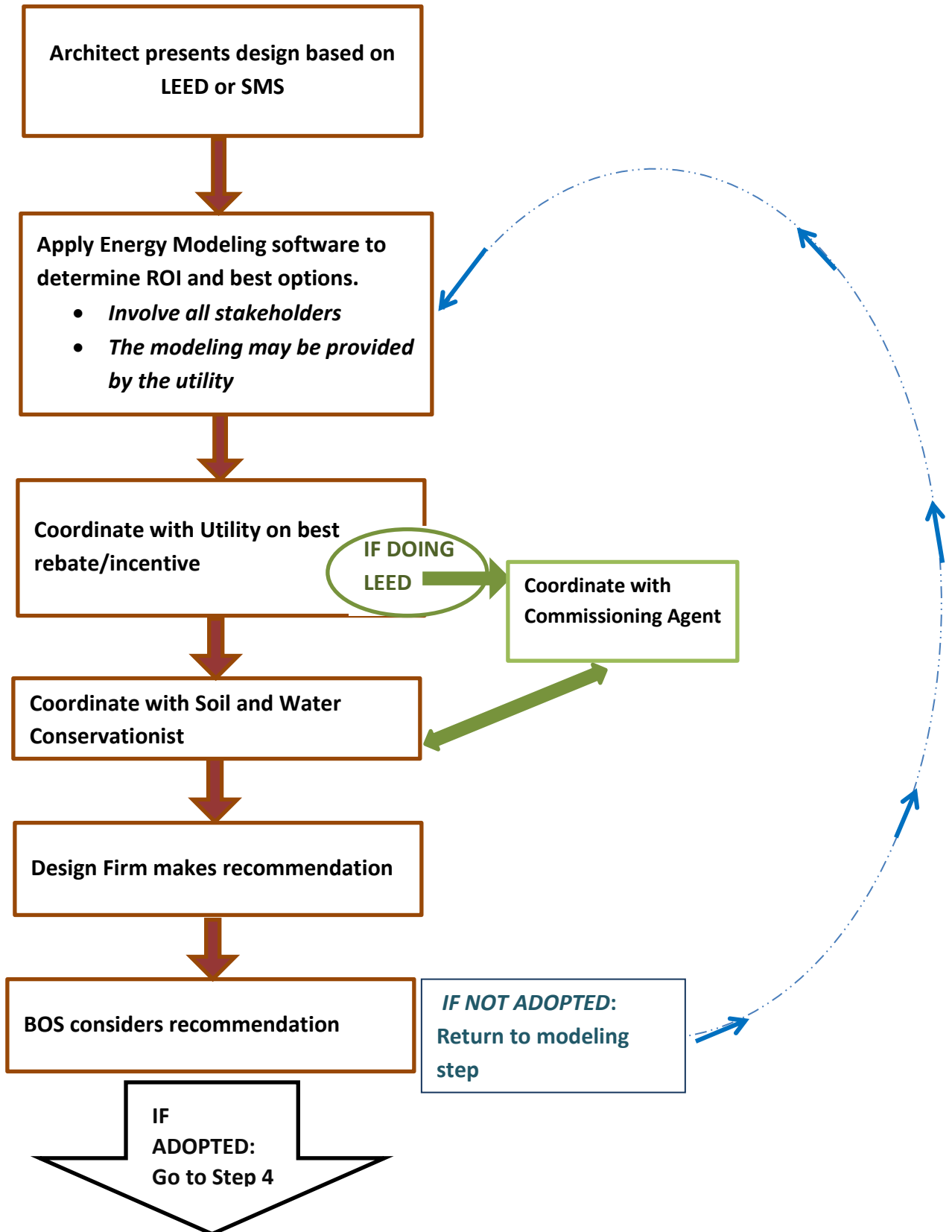
- * Visioning session to include discussion of
- Lifecycle Cost
 - Energy Efficiency Goals
 - Stormwater Management
 - Greenhouse Gas Emissions/ Location
 - Renewable Energy Strategies

STEP #2: REQUEST FOR PROFESSIONAL (RFP) SERVICES
BOS, Physical Plant, Sustainability Staff, Department(s) Involved



STEP #3 DESIGN, ENERGY MODELING, AND ACCEPTANCE

Design Team, BOS, Physical Plant, Sustainability Staff, Department(s)



STEPS #4-5 BID AND CONSTRUCTION DOCUMENTS; CONSTRUCTION
Design Team, BOS, Physical Plant, Sustainability Staff, Temporary Project Manager (if hired), Department(s)

