

JOHNSON COUNTY AVIAN ADVENTURE



FEBRUARY 1- MARCH 24

INSTRUCTIONS

1. Use the site maps below to plan your adventure.
2. Avian Adventure runs February 1 through March 24, 2024. Visit as many of the 12 Avian Adventure locations as possible and find the hidden mystery bird at each site.
3. Once you find the Avian Adventure Station at each location, read the posted instructions on where to find each bird. The station signs give you information about the bird's habitat and behavior, which will help you find the hidden bird.
4. Congratulations! Once you find the bird you are looking for, take a selfie with the bird and post to social media (Instagram or Facebook). Be sure to use the hashtag **#JCAvianAdventure** and **set your account/post to public, so we can view the post.** Alternatively, you may email your submissions to: MWiegand@JohnsonCountyIowa.gov

ADDITIONAL DETAILS

- With each station completed, you earn an entry into the Avian Adventure raffle. Participants who visit **10 stations** or more will be entered to win the grand prize.
- **Bonus Points:** Correctly identify the birds you find and you will receive a bonus point for each one!
- Avian Adventure winners will be announced at the Avian Adventure trivia night from 6-8 p.m. on Thursday, March 28 at Big Grove Brewery in Iowa City. Trivia night is optional and you do not have to be present to win Avian Adventure prizes.

TRIVIA NIGHT
6-8 P.M. MARCH 28
BIG GROVE IN IOWA CITY



MORE INFO:

JOHNSONCOUNTYIOWA.GOV/CONSERVATION/EVENTS



JOHNSON COUNTY AVIAN ADVENTURE



RAFFLE PRIZES INCLUDE:

GRAND PRIZE:

Vortex Viper Binoculars & Various Vortex swag from **Vortex Optics** (\$720 value)

**Visit 10 or more stations to be entered into the grand prize drawing*

ADDITIONAL PRIZES:

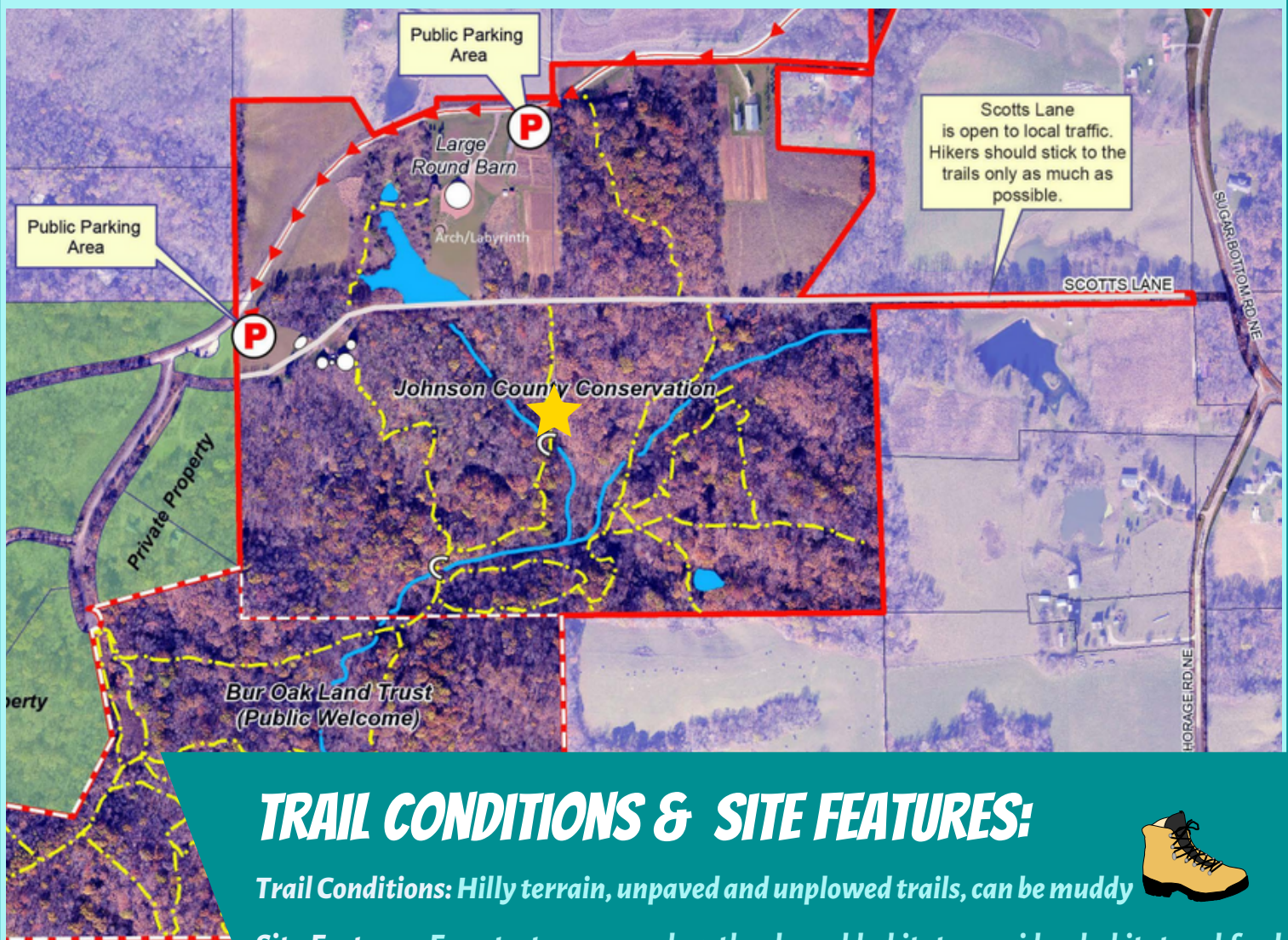
A Bird's Eye Vue Package- Rooftop Dining experience at **VUE** (\$50 Gift Certificate) + One-Night Stay at the **Hilton Garden in in Downtown Iowa City**, Vortex Diamondback binoculars from **Scheels**, Date Night Package from **FilmScene**, Tube Birdfeeder Starter Kit from **Theisen's**, \$50 Gift Certificate to **Tin Roost**, Free T-shirt coupon from **RAYGUN**, \$25 Gift Certificate to **World of Bikes**, Family Day Pass from **Iowa Children's Museum**, Mason Cash Mixing Bowl + bird and bee baking items from **Prairie Kitchen Store**, Bird Bonanza Seed Mix from **Prairie Moon Nursery**, Four tickets to "Wizard of Oz" at **Coralville Center for the Performing Arts**

Winners drawn at the Avian Adventure Trivia Night at Big Grove Brewery in Iowa City from 6-8 pm on Thursday, March 28. You do not need to be present but it is sure to be fun!

CANGLESKA WAKAN

2257 Sugar Bottom Rd. NE , Solon, IA 52333

If open, park at the second (west) public parking lot when traveling from Sugar Bottom Rd. Approach the three round barns, follow the service road passing the large pond, stone arch, and large barn on your left. Near the top of the hill, turn right on the trail and head toward the red covered bridge. You will find the Avian Adventure station just before crossing the covered bridge. You will find further clues about the bird you are seeking there at the Avian Adventure station! Note: You can also approach the station using the trail behind the three round barns. Watch for low levels of traffic on the road.



TRAIL CONDITIONS & SITE FEATURES:

Trail Conditions: Hilly terrain, unpaved and unplowed trails, can be muddy



Site Features: Forest, streams, and wetland pond habitats provides habitat and food resources to wildlife year-round. In addition to the three round barns near the entrance, be sure to stop by the large Celebration Barn and check out the amphitheater, stone archway, and labyrinth located near the first public parking area.

Parking: It is sometimes necessary to close the second parking lot if it becomes too muddy. If so, park at the first parking lot and look at the map to find where to start your adventure.

CEDAR RIVER CROSSING

***North Access* 5473 Sutliff Rd NE Solon, IA 52333**

***South Access* 5398 160th St NE Solon, IA 52333**

We recommend parking at the north access for this station. From the first parking lot (near restrooms), head southwest and follow the red dotted line shown on the map. Stay below the ridge line and follow along where wetland area typically is seen between the trail and river. Look for the Avian Adventure station before you come to the bridge and just below the trail up to the astronomical clock (see star on the map below).



Visitors entering from the south entry to Cedar River Crossing can expect to travel through a wetland/wet meadow for at least 300 feet. The suggested hiking route is not a regularly maintained trail.



TRAIL CONDITIONS & FEATURES:

Trail Conditions: The trail to the Avian Adventure station is flat & unpaved.

Site Features: Extend your visit by taking any number of other trails during your visit. This conservation area is 610 acres total and offers numerous opportunities for viewing wildlife in unique habitat, including relic sand prairie, river, and wetland habitats. Be sure to visit the astronomical clock just above the Avian Adventure station, as well.

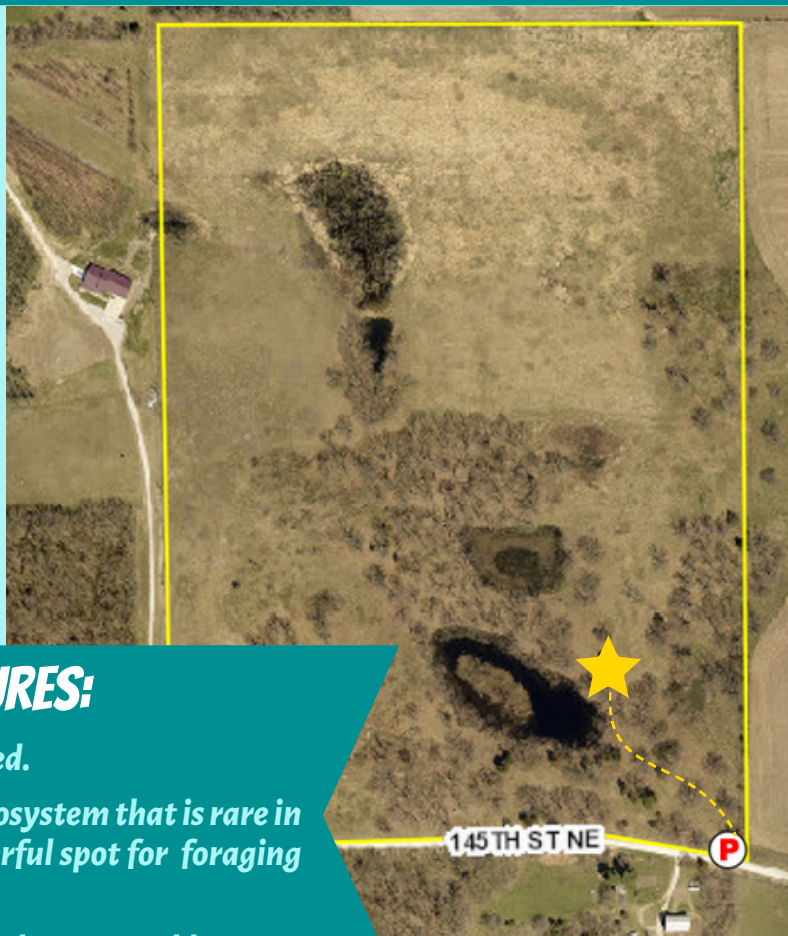
CIHA FEN PRESERVE

5656 145th St NE

Lisbon, IA 52253

From the parking lot, follow the trail going northwest up a small hill. At the top of the hill you will see an information panel where you can learn more about fens, a unique ecosystem to this site and our region.

Look for the Avian Adventure station posted across from the fen. There you will find more clues on where to find this station's mystery bird!



TRAIL CONDITIONS & FEATURES:

Trail Conditions: Small incline, unpaved.

Site Features: Wind-deposited sandy ridge, fen ecosystem that is rare in the state of Iowa, and striking oak trees. A wonderful spot for foraging for raspberries and wild strawberries.

Parking: Park along road if parking pad is unplowed or too muddy.

CLEAR CREEK CONSERVATION AREA

3196 Half Moon Avenue NW

Tiffin, IA 52340

Park at the Half Moon Ave. parking lot and head east on the trail. Follow along between the railroad tracks and the creek. The trail will turn slightly to be more surrounded by tree cover. Walk a short distance and keep an eye out for the Avian Adventure station there!



TRAIL CONDITIONS & FEATURES:

Trail Conditions: Flat, paved, used by cyclists & walkers but unplowed

Site Features: This paved trail is an extension of the Clear Creek Trail which runs throughout Coralville and into Tiffin. JCC is currently planning the next stage of trail construction which will eventually connect to Kent Park just down HWY 6.

FRYTOWN CONSERVATION AREA

2198 Angle Road SW, Kalona, IA 52247

See parking instructions below for when you arrive to this dreamy, 94-acre rolling landscape. Follow the trail outlined in yellow below to where you find the star on the map. You will cross over a creek that, prior to Johnson County Conservation purchase, was once used as a dumping ground for old farm machinery and vehicles. That stream has since been cleaned up and visitors can enjoy a variety of outdoor activities all-year round, including bird-watching, foraging, hiking, and general nature observation. Although parking can be tricky during winter, this is a beautiful site where we encourage you to extend your visit beyond your time finding the mystery bird. Get out for a nice walk through the woods, do some birding, find some fungi, and more!



TRAIL CONDITIONS & FEATURES:

Trail Conditions: Wide, unpaved and unplowed trails that can be hilly at times

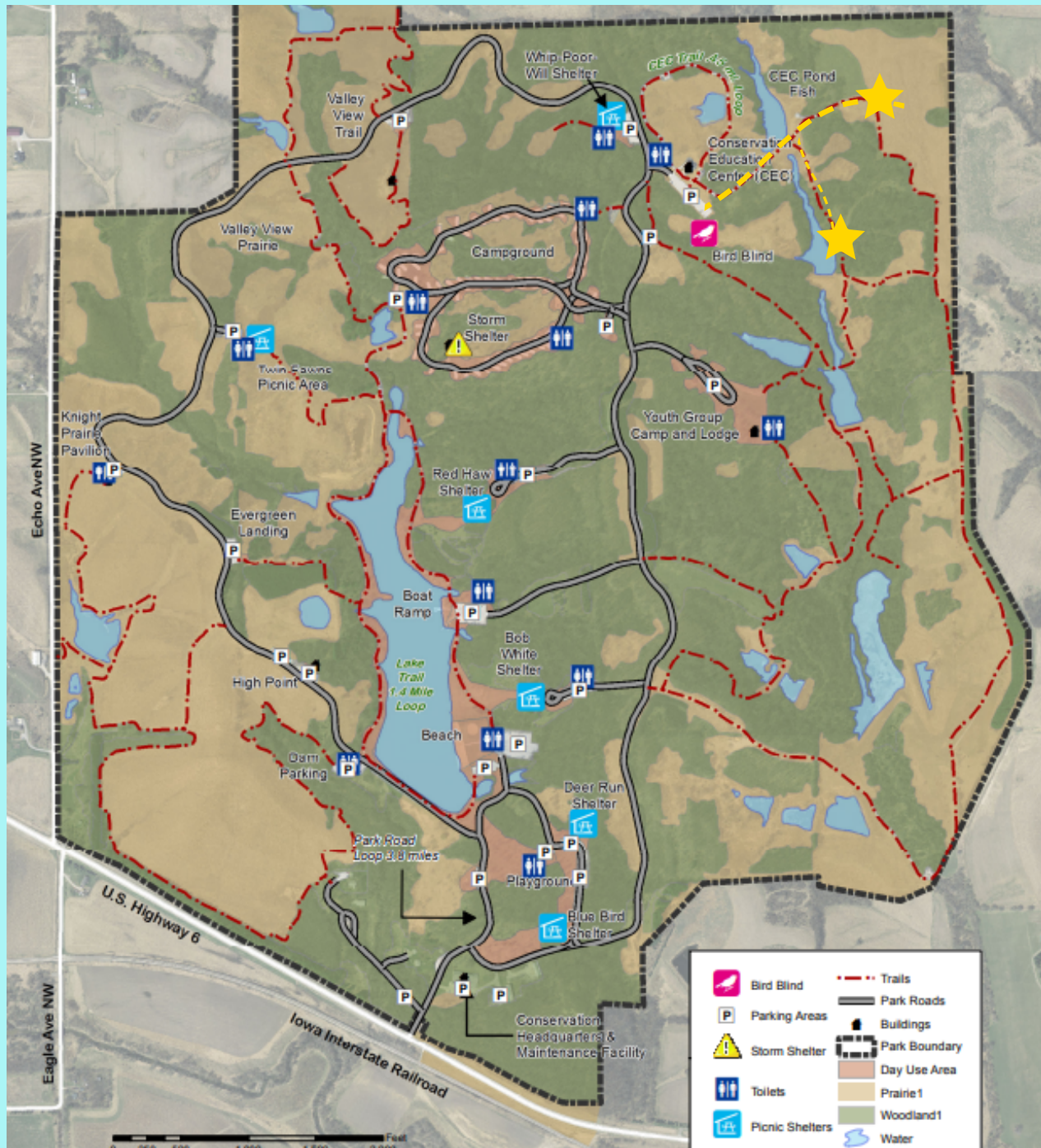
Site Features: This site features wide trails for hiking and a rolling, hilly landscape. Frytown provides an important woodland corridor for wildlife and a restored stream running throughout provides needed resources for birds and many other wildlife you will find here, as well.

Parking: If main parking lot is unplowed or too muddy from snow melt, park in the pull-off along the road. Be mindful of traffic when exiting or entering your vehicle.

F.W. KENT PARK *Two stations!*

2048 US-6 NW, Oxford, IA 52322

Park at the Conservation Education Center and follow the trails in yellow/red below to find the two Kent Park Avian Adventure stations (located at stars on map below)!



TRAIL CONDITIONS & FEATURES:

Trail Conditions: Unpaved, hilly. Trails are groomed for XC skiing in snow. Be sure to walk along the far edge of the groomed trails.

Site Features: This hike features unique wetland, lake, and prairie habitat. Be sure to stop by the Bird Blind just off the Conservation Education Center parking lot when you visit!



PECHMAN CREEK DELTA

5875 Sand Rd SE Lone Tree, IA 52755

Park in the public parking area behind the large shed behind the farmhouse. If this parking is too muddy from rain or snow melt, park closer to the farm house. Take the trail west where you will cross creek habitat. Find the Avian Adventure station at the location shown with the yellow star on the map and there you will find additional clues about the mystery bird you are looking for. This property is bordered by the Iowa River and provides resources to an abundance of wildlife.



TRAIL CONDITIONS & FEATURES:

Trail Conditions: Unpaved, unplowed, flat terrain

Site Features: Plan to extend your trip to this site and enjoy a longer hike at this 380 acre property that will soon be the site of major restoration. In the area that is currently being leased for cropland, native woodland and wetland ecosystems will soon be restored. Additional trails and amenities will also be added for public use.

Parking: If main parking lot is closed due to mud or snow, park on more solid ground near the outbuildings.



PHEBE TIMBER

**4492 Kansas Avenue SW
Iowa City, IA 52240**

Follow the trail headed north toward Old Man's Creek, then turn right and head east along the creek. The Avian Adventure station can be spotted near the creek around trees special to nesting for this colorful mystery bird.



TRAIL CONDITIONS & FEATURES:

Trail Conditions: Flat terrain, unpaved, short distance

Site Features: 27 acres donated by the Williams family in 2021. A great place to see spring ephemerals in early spring.

Parking: There is a small gravel parking lot off Kansas Ave, which is unplowed in snow. Park along road if lot is unplowed or too muddy.

SOLON PRAIRIE

**713 E. 5th St.
Solon, IA 52333**

Look for the Avian Adventure near the parking pad. The station clues will give you clues to find your bird along the western edge of this prairie.



TRAIL CONDITIONS & FEATURES:

Trail Conditions: Flat, unpaved, no trail, thick prairie vegetation.

Site Features: This relic prairie provides needed habitat to grassland and woodland birds right in the heart Solon. New housing and other development now surrounds this small plot, where agriculture and open space once stood. As development continues, the preservation of land, large and small, provides needed habitat for a diversity of species, including birds.

Parking: If main parking lot is unplowed, park along the road. Be mindful of traffic when exiting or entering your vehicle.

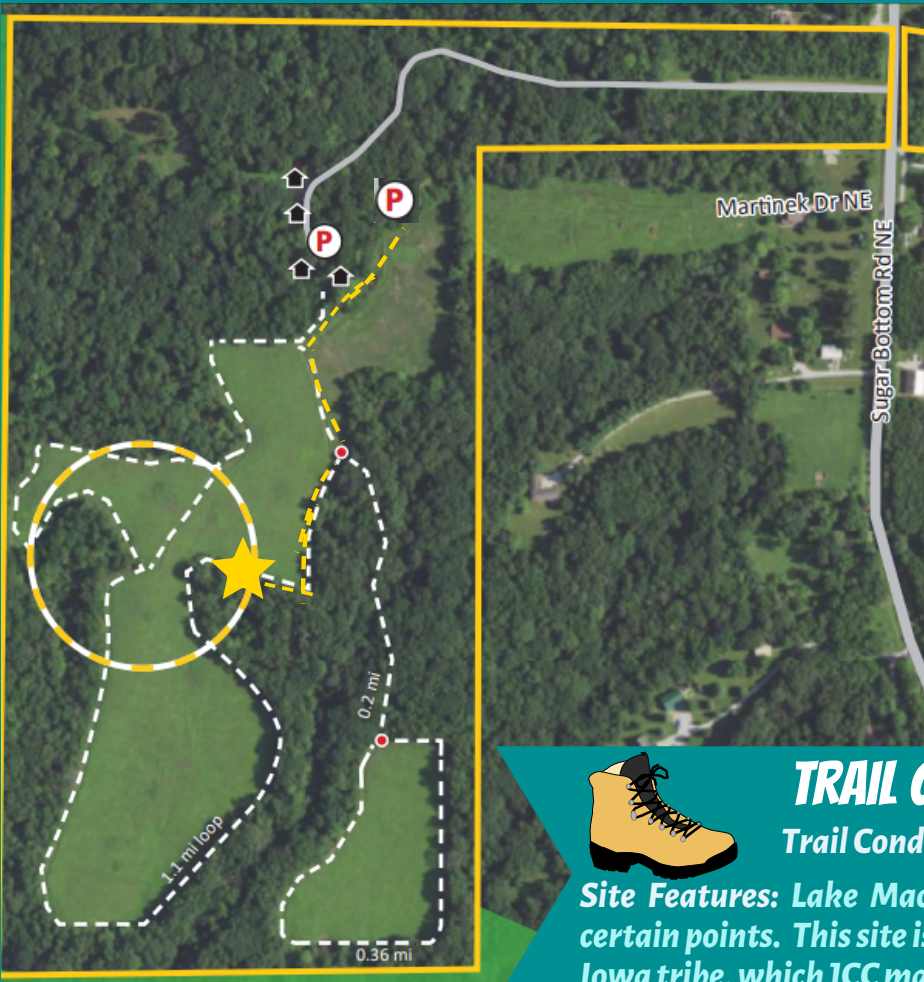
TWO HORSE FARM

2257 Sugar Bottom Rd. NE

Solon, IA 52333

Turn left at the end of the long driveway and park in the designated public parking lot. If this lot is too muddy, park near the farmhouse if conditions are better.

Head south through the prairie and you will pass the farmhouse on the right. Follow the yellow trail on the map and along the woodland's edge, marked with a star on the map, you will find Avian Adventure station where you will find more clues on where to find this station's mystery bird.



TRAIL CONDITIONS & FEATURES:

Trail Conditions: Hilly terrain, unpaved

Site Features: Lake Macbride can be seen in the distance from certain points. This site is also home to a plot of land owned by the Iowa tribe, which JCC manages and is open to the public.

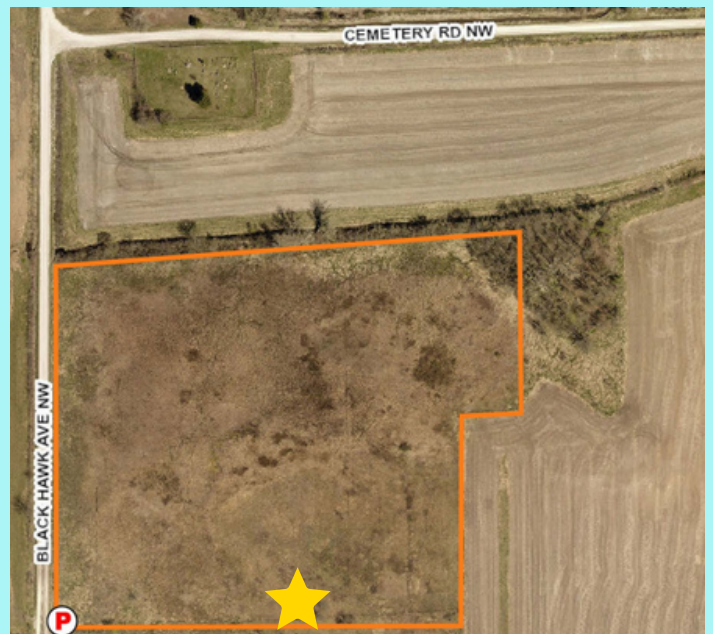
WILLIAMS PRAIRIE STATE PRESERVE

2298 Black Hawk Ave NW

Oxford, IA 52322

Find the Avian Adventure station partway along the fence line at the southern portion of this property.

***Please note that Black Hawk Road between Williams Prairie and HWY 6 is not plowed and becomes impassable. You can still access this site from Grabin Rd. or Cemetery Rd. Check your maps before you go.



TRAIL CONDITIONS & FEATURES:

Trail Conditions: Flat but rough terrain through thick vegetation. No official trail but a walking path can be made around the perimeter of the prairie where there is a burn break mowed.

Site Features: This 21 acre property is an ecological gem. At least 315 native plant species have been observed and endangered species such as the ornate box turtle find habitat here.

Parking: If main parking lot is unplowed or too muddy from snow melt, park along the road. Be mindful of traffic when exiting or entering your vehicle.