

SECTION 00 9111
ADDENDUM NUMBER 02

PARTICULARS:

DATE: February 10, 2026
PROJECT: Shower House F.W. Kent Park
PROJECT NUMBER: 2250000910
OWNER: Johnson County Conservation
ARCHITECT: Shive-Hattery, Inc.

TO: PROSPECTIVE BIDDERS:

THIS ADDENDUM FORMS A PART OF THE BIDDING AND CONTRACT DOCUMENTS AND MODIFIES THE BIDDING DOCUMENTS DATED 01-23-2026 WITH AMENDMENTS AND ADDITIONS NOTED BELOW. THIS ADDENDUM SUPERSEDES AND SUPPLEMENTS ALL PORTIONS OF THE ORIGINAL BIDDING AND CONTRACT DOCUMENTS WITH WHICH IT CONFLICTS.

ACKNOWLEDGE RECEIPT OF THIS ADDENDUM IN THE SPACE PROVIDED IN THE BID FORM. FAILURE TO DO SO MAY DISQUALIFY THE BIDDER.

GENERAL CLARIFICATIONS

1. The scope of work to be provided by Woodman Controls is included as an attachment.

QUESTIONS AND ANSWERS

1. **Q:** Confirm whether the Owner will provide Builder's Risk/All-Risk property insurance covering the Work, including materials in transit, stored on site, and during installation; or if the Contractor is required to provide Builder's Risk coverage, please confirm that this is the intent and identify any minimum coverage requirements or special conditions.
A: Johnson County will obtain builder's risk insurance in alignment with the included standard AIA contract. This is made by reference to AIA 201.
2. **Q:** Related to the solar inverters, most modern inverters do not have screens, transformers, or integrated AC disconnects. The inverter picked in the documents contradicts their requirements.
A: See updated specifications.
3. **Q:** The panel size desired were 700W, with the desired single phase solaredge system, max panel size is 440W.
A: See updated specifications.
4. **Q:** Will there be internet at the site for monitoring or do we need a cellular solution?
A: The county's network fiber will be extended into the showerhouse building for communications.

CHANGES TO THE SPECIFICATIONS

1. SECTION 08 1216 - Aluminum Door Frames
 - a. DELETE this section entirely. Revised door frame specifications are added to Section 13 4345.
2. SECTION 08 1613 - Fiberglass Doors
 - a. DELETE this section entirely. Revised door specifications are added to Section 13 4345.
3. SECTION 08 4313 - Aluminum-Framed Storefronts
 - a. DELETE this section entirely. Revised window specifications are added to Section 13 4345.
4. SECTION 08 7100 - Door Hardware
 - a. DELETE this section entirely. Revised door hardware specifications are added to Section 13 4345.
5. SECTION 08 8000 - Glazing
 - a. DELETE this section entirely. Revised glazing specifications are added to Section 13 4345.
6. SECTION 13 4345 - Modular Precast Concrete Structures
 - a. DELETE Paragraphs 1.2.A, 1.2.B, 1.2.C, 1.2.E, 1.2.F, 1.2.G. This removes references to the sections that are deleted above.
 - b. REPLACE Paragraph 2.4.H with the following:
 - H. Windows: Provide vinyl sash frames.
 1. Window Types: Fixed.
 - a. Basis of Design: Parco Windows & Patio Doors: www.parcowindows.com.
 - b. Two 30 by 18 inch windows per module. Locate windows adjacent to
 2. Glass Type: Obscure, insulating glass.
 - a. Seal perimeter of glazing with manufacturer's standard materials.
 3. Overall U-value of Fixed Glazing, Including Glazing: 0.38 Btu/(hr sq ft deg F) (2.15 W/(sq m K)), maximum.
 4. Frame Color: As selected from manufacturer's available colors.
 5. Provide 2 windows in each module.
 - b. REPLACE subparagraphs 2.4.I.1 and 2.4.I.2 with the following:
 1. Swinging Exterior Door: 1-3/4 inches (44.45 mm) thick, insulated, fiberglass, flush doors and frames.
 - a. Size: 36 inches (914 mm) wide by 80 inches (2032 mm) high.
 - b. Door Finish: Factory finished.
 - c. Frame Finish: Same as hollow metal door.

- c. REPLACE Paragraph 2.4.H with the following:
- K. Door Hardware:
 - 1. Butt Hinges: Stainless steel with non-removable pin. Cal-Royal or equal.
 - 2. Locksets: Grade 1 Cylindrical lever lock with removable cylinder capable of being master keyed. Cal-Royal or equal.
 - d. Shower modules: Privacy function.
 - 1) In addition to level locksets, provide a deadbolt on each door.
 - e. Mechanical equipment modules: Storeroom function.
 - 3. Surface Bolts: one at head and one at threshold of inactive leaf on pair of doors.
 - 4. Closer: hydraulic, with hold-open. Cal-Royal or equal.
 - 5. Weatherstrip: Resilient. Reese or equal.
 - 6. Sweep: Brush. Reese or equal.
 - 7. Threshold: ADA compliant. Reese or equal.
 - 8. Finish: As selected from manufacturer's available finish options.
- 7. SECTION 26 3100 PHOTOVOLTAIC COLLECTORS
 - a. REMOVE Section 2.1 B. 2. "Tier 1 Manufacturer per the latest list by Bloomberg"
 - b. REMOVE Section 2.4 B 2. b. "LCD Display"
 - c. REMOVE Section 2.4 B 2. c. "Integral AC Disconnect"
 - d. REMOVE Section 2.4 C. "Isolation Transformers"

CHANGES TO THE DRAWINGS

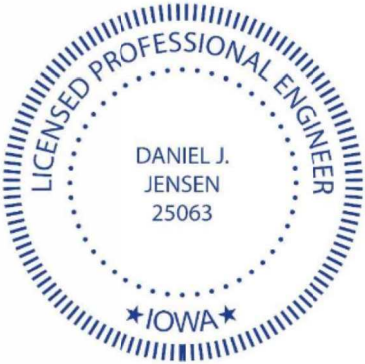

- 8. SHEET E100
 - a. CHANGE solar module to 440W instead of 700W.
- 9. SHEET E500
 - a. CHANGE solar module to 440W instead of 700W.

ATTACHMENTS:

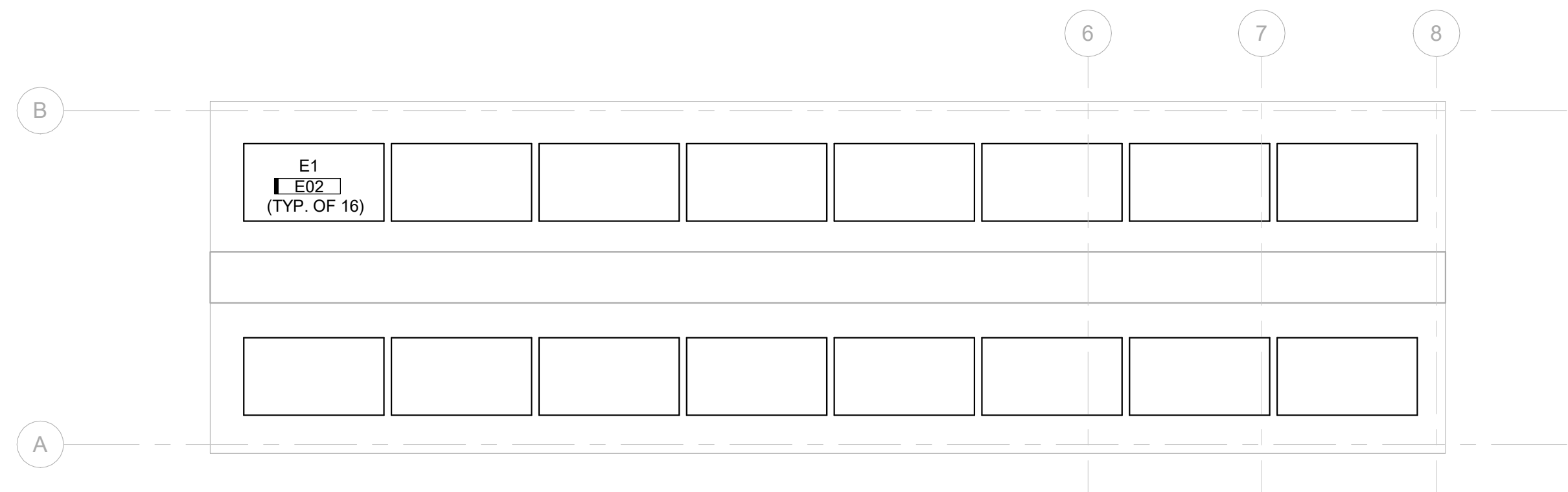
Attachment 1 - Plan Sheets: E100, E500

Attachment 2 – Specifications: Section 13 4345, Woodman Controls Scope

PREPARED BY: SHIVE-HATTERY, INC.

	I hereby certify that this engineering document was prepared by me or under my direct personal supervision and that I am a duly licensed Professional Engineer under the laws of the State of Iowa.	
		2/10/2026
	Signature	Date
	Printed or Typed Name	<u>Daniel Jensen</u>
	License Number	<u>25063</u>
	My License Renewal Date is:	<u>12-31-2027</u>
	Pages, Sheets, or Divisions covered by this Seal: Addendum 02.	

END OF ADDENDUM NUMBER 02

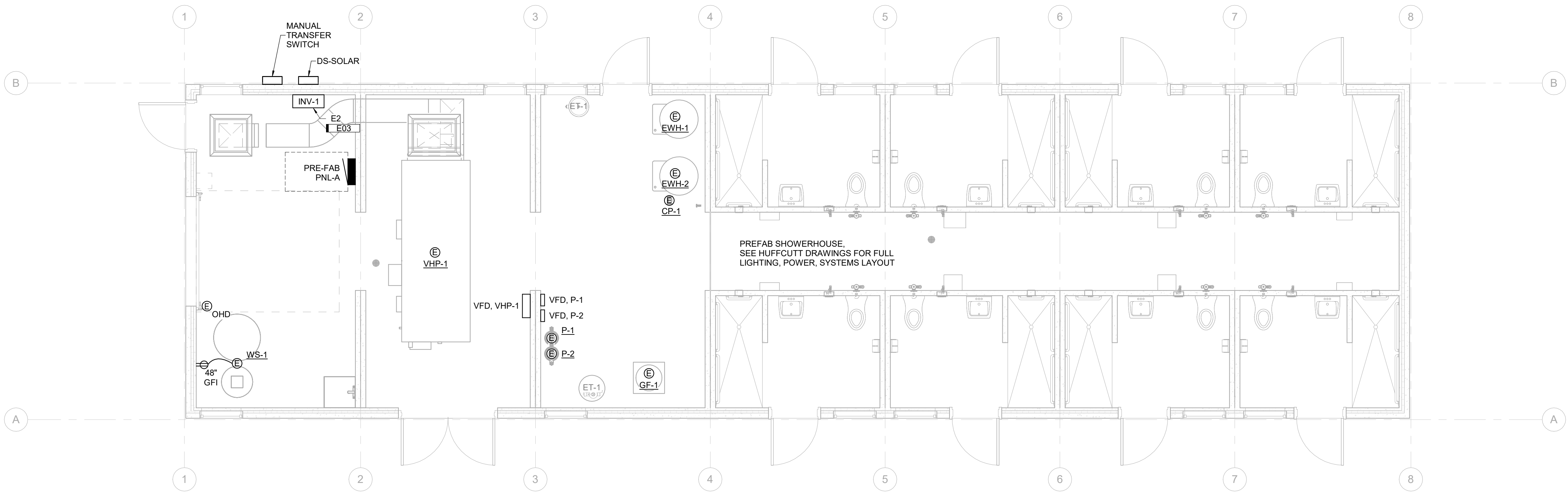


1 SOLAR ROOF PLAN
1/8" = 1'-0" 0'

- POWER**
- ELECTRICAL CONTRACTOR SHALL BE RESPONSIBLE FOR WIRING ALL ELECTRICAL ITEMS SHOWN ON THIS DRAWING.
 - WHERE CONNECTED TO A 20A. BRANCH CIRCUIT SUPPLYING AN INDIVIDUAL RECEPTACLE (SIMPLEX OR DUPLEX), THE RECEPTACLE SHALL BE RATED AT 20A.
 - VERIFY LOCATIONS AND ROUGH-IN REQUIREMENTS OF ALL OWNER FURNISHED EQUIPMENT PRIOR TO ROUGH-IN.
 - PROVIDE HOUSEKEEPING PADS FOR ALL FLOOR MOUNTED AND GRADE MOUNTED ELECTRICAL EQUIPMENT. MINIMUM REQUIREMENTS: 4" HIGH, 4% AIR ENTRAINED, POLYFIBER REINFORCED CONCRETE, 4" WIDER AND 4" LONGER THAN EQUIPMENT TO BE PLACED ON IT. REFER TO ELECTRICAL DETAIL DRAWINGS FOR TRANSFORMER, GENERATOR, OR SWITCHGEAR PADS THAT MAY EXCEED THESE REQUIREMENTS.
 - CONDUIT AND WIRE SHALL NOT BE INSTALLED BELOW FLOOR SLAB UNLESS INDICATED ON PLAN BY DASHED CONDUIT.
 - ANY MODIFICATIONS TO THE NUMBER, SIZE, AND TYPE OF WIRES OR CONDUITS FROM THOSE INDICATED ON THIS DRAWING ARE PROHIBITED.

- SYSTEMS**
- ELECTRICAL CONTRACTOR SHALL BE RESPONSIBLE FOR WIRING ALL ELECTRICAL ITEMS SHOWN ON THE DRAWINGS, EXCEPT FOR SECURITY DEVICES. PROVIDE ROUGH-IN ONLY FOR SECURITY DEVICES, CAMERAS AND CARD READERS.
 - MAXIMUM NUMBER OF 4 INFORMATION OUTLET LOCATIONS PER CONDUIT HOME RUN TO MDF OR IDF IS PERMITTED. CONDUIT SHALL BE SIZED AS FOLLOWS:
 - 1 INFORMATION OUTLET LOCATION: 1"
 - 2 INFORMATION OUTLET LOCATIONS: 1 1/4"
 - 3 INFORMATION OUTLET LOCATIONS: 1 1/2"
 - INSTALL CONDUIT WITH NO MORE THAN (2) 90° BENDS BETWEEN PULL BOXES, AND NO MORE THAN 100'-0" BETWEEN PULL BOXES. PULL BOXES SHALL BE INSTALLED FOR STRAIGHT THRU PULLS ONLY.
 - ALL COMMUNICATIONS CABLES SHALL BE INSTALLED IN CONDUIT, CABLE TRAY, OR SUPPORTED BY CABLE HOOKS. PROVIDE BUSHINGS AT THE ENDS OF ALL CONDUIT WHERE STUBBED ABOVE ACCESSIBLE CEILINGS OR WHERE DROPPED INTO CABLE TRAY. PROVIDE CABLE HOOKS ABOVE ACCESSIBLE CEILINGS FOR CABLE INSTALLATION WHERE NOT INSTALLED IN CONDUIT OR CABLE TRAY.
 - FIRE ALARM WIRING DOES NOT NEED TO BE IN CONDUIT.

KEYNOTES	
KEY	NOTE
E02	440 WATT SOLAR MODULE MOUNTED TO PRECAST ROOF. MOUNT PER PRECAST AND MODULE MANUFACTURER RECOMMENDATIONS.
E03	NEW INVERTER TO BE CONNECTED TO EXISTING SOLAR EDGE INVERTERS ON EXISTING GROUND MOUNTED SOLAR INSTALLATION. FURNISH AND INSTALL MEDIA CONVERTERS AND UTILIZE EXISTING FIBER NETWORK TO CONNECT THE INVERTERS.



2 SHOWERHOUSE LIGHTING, POWER & SYSTEMS PLAN
1/4" = 1'-0" 0'

MECHANICAL AND ELECTRICAL COORDINATION SCHEDULE

GENERAL NOTES:

A. MOCPSIZES SHOWN BELOW ARE FOR BIDDING PURPOSES ONLY. VERIFY MOCPS WITH EQUIPMENT NAME PLATE DATA PRIOR TO ORDERING EQUIPMENT.
B. MINIMUM WIRE SIZE SHALL BE #12 AWG AND MINIMUM CONDUIT SIZE SHALL BE 3/4".
C. INCLUDE A SEPARATE, GREEN, CONDUCTOR IN ALL FEEDER AND BRANCH CIRCUIT CONDUITS.

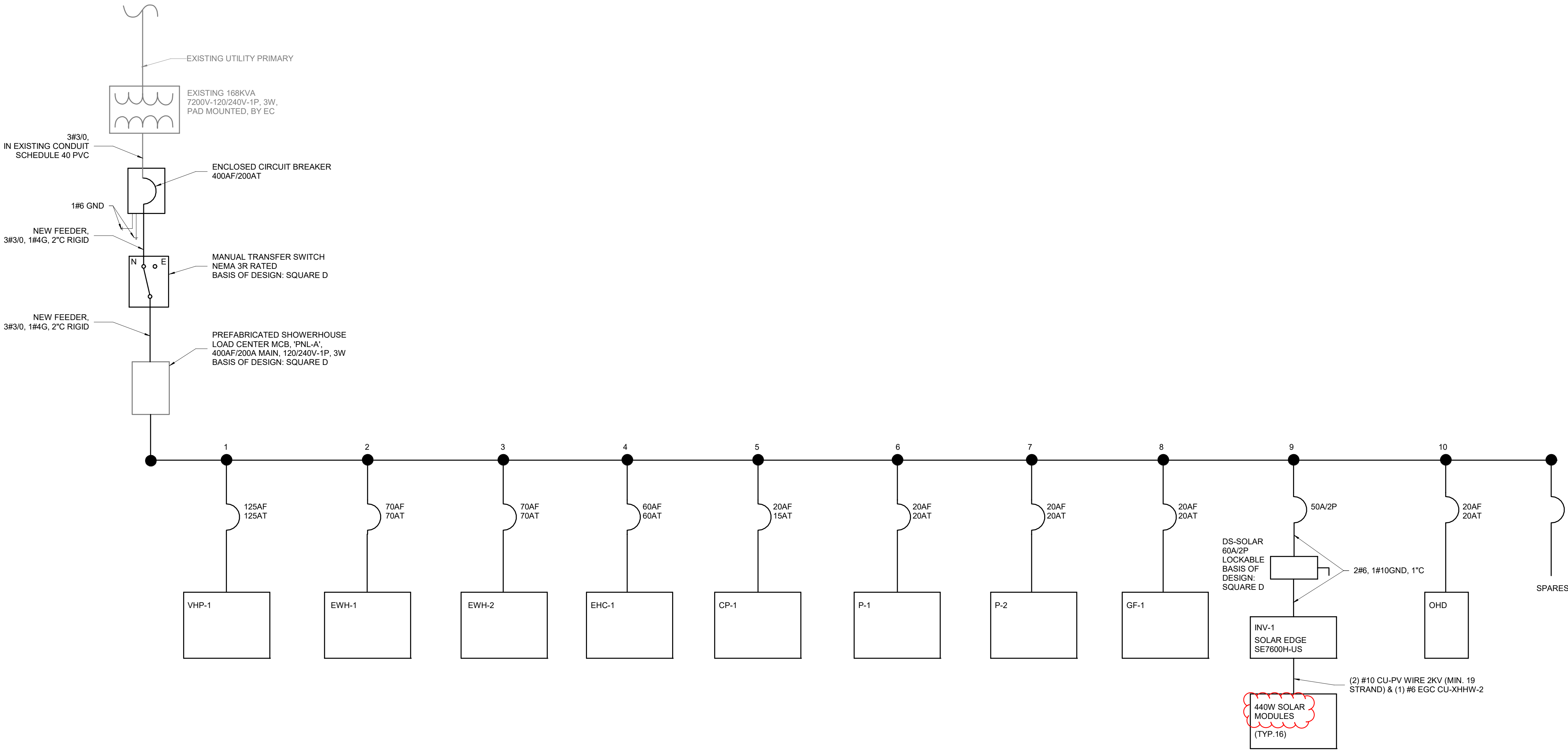
ABBREVIATIONS:

EC - ELECTRICAL CONTRACTOR
MC - MECHANICAL CONTRACTOR
MFR - MANUFACTURER
TCC - TEMPERATURE CONTROL CONTRACTOR
OWN - OWNER

REMARKS:

1. XXX.
2. XXX.

MARK	VOLTAGE	PHASE	FLA	MCA	MOCPS	HP	KVA	CONDUIT AND WIRE SIZE	CONTROL OR STARTER	CONTROLLER OR STARTER FURNISHED / INSTALLED	DISCONNECT TYPE	DISCONNECT FURNISHED / INSTALLED	REMARKS
CP-1	120	1	0.8	1	15	-	0.092	2#12, 1#12GND, 3/4"C	AQUASTAT	MC/EC	NEMA 1, MS	EC/EC	XXX
EWH-1	240	1	50	62.5	70	-	12	2#4, 1#8GND, 1"C	INTERNAL	-	NEMA 1, MS	EC/EC	XXX
EWH-2	240	1	50	62.5	70	-	12	2#4, 1#8GND, 1"C	INTERNAL	-	NEMA 1, MS	EC/EC	XXX
GF-1	120	1	7.2	9	20	0.33	0.864	2#12, 1#12GND, 3/4"C	INTERNAL	-	NEMA 1, MS	EC/EC	XXX
P-1	240	1	8	10	20	1	1.92	2#12, 1#12GND, 3/4"C	VFD	EC/EC	NEMA 1, MS	EC/EC	XXX
P-2	240	1	8	10	20	1	1.92	2#12, 1#12GND, 3/4"C	VFD	EC/EC	NEMA 1, MS	EC/EC	XXX
VHP-1	240	3	68	83.7	100	-	28.267	2#3, 1#8GND, 1"C	VFD	MFR/EC	NEMA 3R, F	MFR/EC	XXX



A4 ONE-LINE DIAGRAM
NOT TO SCALE

**SECTION 13 4345
MODULAR PRECAST CONCRETE STRUCTURES**

PART 1 GENERAL

1.1 SECTION INCLUDES

- A. Modular Precast Concrete Structures.

1.2 RELATED REQUIREMENTS

- A. Section 08 1116 - Aluminum Doors and Frames: for swinging doors to be provided under the work of this Section.
- B. Section 08 1216 - Aluminum Door Frames
- C. Section 08 1613 - Fiberglass Doors
- D. Section 08 3613 - Sectional Doors: for overhead doors to be provided under the work of this Section.
- E. Section 08 4313 - ALUMINUM-FRAMED STOREFRONTS
- F. Section 08 7100 - DOOR HARDWARE.
- G. 08 8000 - GLAZING

1.3 REFERENCE STANDARDS

- A. ASCE 7 - Minimum Design Loads and Associated Criteria for Buildings and Other Structures; Most Recent Edition Cited by Referring Code or Reference Standard.
- B. ASTM A653/A653M - Standard Specification for Steel Sheet, Zinc-Coated (Galvanized) or Zinc-Iron Alloy-Coated (Galvannealed) by the Hot-Dip Process; 2025a.
- C. ICC (IECC)-2012 - International Energy Conservation Code; 2012.
- D. ITS (DIR) - Directory of Listed Products; Current Edition.
- E. NFPA 70 - National Electrical Code; Most Recent Edition Adopted by Authority Having Jurisdiction, Including All Applicable Amendments and Supplements.
- F. UL (DIR) - Online Certifications Directory; Current Edition.

1.4 ADMINISTRATIVE REQUIREMENTS

- A. Preinstallation Meeting: Conduct a preinstallation meeting one week before the start of work; require attendance by affected installers.
 - 1. Verify building requirements, substrate conditions, utility connections, and manufacturer's installation instructions.

1.5 SUBMITTALS

- A. See Section 01 3000 - Administrative Requirements for submittal procedures.
- B. Product Data: Submit product data sheets, including material descriptions, dimensions and profiles of components and finishes, and preparation instructions and recommendations.

- C. Shop Drawings: Submit plans, elevations, sections, construction details, and utility connections as necessary for this work.
 - 1. Include design engineer's certification and stamp or seal on shop drawings.
- D. Structural Engineer Certification: Letter signed by a Professional/Structural Engineer, registered to practice in the State of Iowa, verifying compliance with Design Requirements. Letter shall reference specific dead loads, live loads, snow loads, wind loads, tributary area load reductions (if applicable), collateral loads, seismic loads, end use categories, applied soil bearing pressures, and governing building code including edition and load applications. In lieu of a letter, the required information may be provided on the shop drawings.
- E. Manufacturer's qualification statement.
- F. Executed warranty.

1.6 QUALITY ASSURANCE

- A. Manufacturer Qualifications: Company specializing in manufacturing products specified in this section, with not less than three years of documented experience.
- B. Manufacturer shall be an NPCA Certified Plant or equal with verifiable references demonstrating quality, design and service upon request.
- C. Installer Qualifications: Manufacturer of structure.

1.7 WARRANTY

- A. See Section 01 7800 - Closeout Submittals for additional warranty requirements.
- B. Manufacturer Warranty: Provide the following warranties: 20-year structural manufacturer warranty for fabricated structures that fails in materials or workmanship; include coverage for exterior prefinished surfaces against chipping, cracking or crazing, blistering, peeling, chalking, or fading and for weathertightness of building enclosure elements. Complete forms in Owner's name and register with manufacturer.
 - 1. 20-year structural manufacturer warranty for fabricated structures that fails in materials or workmanship.
 - 2. 3-year warranty for defects in paint, caulk, and grout.
 - 3. Manufacturer's warranty on all hardware and components not produced at precast concrete manufacturer's plant

PART 2 PRODUCTS

2.1 MANUFACTURERS

- A. Modular Precast concrete structures:
 - 1. Huffcutt Concrete: huffcutt.com.
 - 2. Substitutions: See Section 01 6000 - Product Requirements.

2.2 PERFORMANCE REQUIREMENTS

- A. Structural Performance: Provide factory-fabricated modular building capable of withstanding the following loads and stresses without damage or failure.
 - 1. Loads: Comply with applicable ASCE 7 requirements.

- 2. Member Deflection: Under full live load, maintain maximum deflection of 1/360 of span.
- B. Thermal Movement: Design structure to accommodate thermal movement caused by ambient temperature range of 120 degrees F (67 degrees C) and surface temperature range of 180 degrees F (100 degrees C) without buckling, failure of joint seals, undue stress on fasteners or other detrimental effects on assembly components.
- C. Electrical Components, Devices, and Accessories: Listed and labeled by ITS (DIR), UL (DIR), or testing agency acceptable to authorities having jurisdiction and installed in compliance with NFPA 70, and marked for intended application.

2.3 MODULAR PRECAST CONCRETE STRUCTURES

- A. Application: Shower house, with structure fully factory assembled for freestanding assembly of sections and on-site installation.
 - 1. Base Size: 21.33 by 44.67 feet (6.5 by 13.6 m).
 - 2. Wall Height: 96 inches (2.44 m).
 - 3. Foundation: Concrete.

2.4 COMPONENTS

- A. General: Provide structure that complies with applicable codes for structural integrity, energy efficiency, accessibility, mechanical, plumbing, and electrical systems.
- B. Modules:
 - 1. Two shower/toilet rooms with service chase between: 4 modules; mirror layout of adjacent modules.
 - 2. Mechanical equipment spaces: 3 modules.
- C. Floors:
 - 1. Concrete with smooth trowel finish. Slope floors to drains.
- D. Walls:
 - 1. Insulated precast concrete.
 - a. Wall Makeup: 4 inches concrete, 2 inches insulation, 2 inches concrete.
 - b. Form: Architectural form liner as selected from
 - c. Color: Stain, as selected from manufacturer's available colors.
 - 2. Insulation: Manufacturer's standard, complying with the ICC (IECC)-2012.
- E. Roof:
 - 1. Insulated and sloped to drain at perimeter.
 - 2. Provide minimum roof/ceiling insulation value in compliance with local building code requirements.
 - 3. Roof Configuration: Gable roof, 2/12 pitch.
 - a. Roof Type: Insulated precast concrete.
 - b. Overhang: 8 inches (204 mm).
 - c. Form: Cedar shake architectural form liner as selected from manufacturer's available liners.

- d. Color: Stain, as selected from manufacturer's available colors.
- 4. Gutters and Downspouts: None.
- F. Grout: Grout weld plate panel connections flush with interior wall surface. Speed Crete Red Line or equal.
- G. Sealants: Joints between precast panels and around doors and windows shall be caulked using a durable, flexible polyurethane sealant. BASF Sonolastic NP-1 or equal.
- H. Windows: Provide vinyl sash frames.
 - 1. Window Types: Fixed.
 - a. Basis of Design: Parco Windows & Patio Doors: www.parcowindows.com.
 - b. Two 30 by 18 inch windows per module. Locate windows adjacent to
 - 2. Glass Type: Obscure, insulating glass.
 - a. Seal perimeter of glazing with manufacturer's standard materials.
 - 3. Overall U-value of Fixed Glazing, Including Glazing: 0.38 Btu/(hr sq ft deg F) (2.15 W/(sq m K)), maximum.
 - 4. Frame Color: As selected from manufacturer's available colors.
 - 5. Provide 2 windows in each module.
- I. Exterior Doors: Provide swinging doors to each shower compartment; and two single doors and a pair of doors to the mechanical compartments as shown on the drawings.
 - 1. Swinging Exterior Door: 1-3/4 inches (44.45 mm) thick, insulated, fiberglass, flush doors and frames.
 - a. Size: 36 inches (914 mm) wide by 80 inches (2032 mm) high.
 - b. Door Finish: Factory finished.
 - c. Frame Finish: Same as hollow metal door.
- J. Overhead Door: Provide as specified in Section 08 3613 - Sectional Doors.
- K. Door Hardware:
 - 1. Butt Hinges: Stainless steel with non-removable pin. Cal-Royal or equal.
 - 2. Locksets: Grade 1 Cylindrical lever lock with removable cylinder capable of being master keyed. Cal-Royal or equal.
 - a. Shower modules: Privacy function.
 - 1) In addition to level locksets, provide a deadbolt on each door.
 - b. Mechanical equipment modules: Storeroom function.
 - 3. Surface Bolts: one at head and one at threshold of inactive leaf on pair of doors.
 - 4. Closer: hydraulic, with holdopen. Cal-Royal or equal.
 - 5. Weatherstrip: Resilient. Reese or equal.
 - 6. Sweep: Brush. Reese or equal.
 - 7. Threshold: ADA compliant. Reese or equal.
 - 8. Finish: As selected from manufacturer's available finish options.

- L. Interior Finishes:
 - 1. Floors: Siloxane concrete sealer. TK Products; TK290 Series or equal.
 - 2. Walls: Epoxy paint.
 - a. Application: Concrete walls and ceilings in shower compartments.
 - b. Primer: As recommended by topcoat manufacturer for substrates.
 - c. Two Top Coats: Catalyzed epoxy paint; Semi-Gloss.
- M. Exterior Finishes:
 - 1. Walls: Concrete stain, color as selected.
 - 2. Roof: Concrete stain, color as selected.
- N. Toilet Accessories: ADA and ANSI A117.1 compliant size, function, and location.
 - 1. Toilet Tissue Dispenser: Wall mounted, stainless steel, 3-roll capacity.
 - 2. Paper Towel Dispenser: Wall mounted adjacent to sink.
 - 3. Mirror: Wall mounted above sink, stainless steel frame, 18 inches by 36 inches.
 - 4. Grab Bars: Complying with ANSI A117.1, mounted adjacent to toilet and shower.
 - a. At water closets, provide (1) 18" stainless vertical grab bar, (1) 36" stainless horizontal grab bar, (1) 42" stainless horizontal grab bar.
 - b. At showers, provide (1) 18" stainless vertical grab bar, (1) 30" stainless horizontal grab bar, (1) 42" stainless horizontal grab bar.
 - 5. Shower Seat: Reversible folding, phenolic seat. Bradley Model 9569 or equal.
 - 6. Bench: 42 inches, minimum, long; 20 to 24 inches deep.
 - 7. Coat Hooks: (2) stainless steel.
 - a. Mount one coat hook at 60 inches above floor.
 - b. Mount one coat hook at 48 inches, maximum, above floor.
- O. Plumbing Fixtures: Refer to Plumbing drawings for quantities, locations, and specifications.
- P. Heating/Ventilating/Air Conditioning System: Provided by mechanical contractor. Refer to mechanical drawings and specifications.
- Q. Heating/Air Conditioning (AC) Units: Provided by mechanical contractor.
- R. Electric Power Service: 200 A, 120/240 VAC, single-phase, three-wire.
 - 1. Electrical Panel: Provide breaker panel with at least 14 circuits; located as indicated on drawings.
 - 2. Duplex Outlets: Provide at least 14 20 A, 120 VAC duplex receptacles on interior and 3 weatherproof duplex receptacles on exterior.
 - 3. GFCI Outlets: Provide 120 VAC ground-fault circuit interrupter (GFCI) power duplex receptacle(s) with tester located on exterior at all locations.

- S. Interior Lighting Fixtures: Provide ceiling-mounted, standard light-emitting diode (LED) lighting fixture in each shower room, and 2 fixtures per module in chase and mechanical equipment rooms.
 - 1. Provide occupancy sensor to control light fixtures in each shower room.
 - 2. Provide 3-way switches mounted adjacent to entry doors to control light fixtures in mechanical equipment space.
- T. Exterior Lighting Fixtures: Provide wall-mounted, LED white flood light at 120 volts.
 - 1. Provide 3 fixtures each, on the east and west walls, and one fixture on the north wall.
 - 2. Provide photoelectric controller for exterior lighting.

2.5 FABRICATION

- A. Fabricate structures in modules in factory, including, but not limited to:
 - 1. Glazing of windows and doors.
 - 2. Wiring of electrical systems, made ready for on-site service connection.
 - 3. Piping of mechanical system, made ready for on-site mechanical service connection.
 - 4. Other systems, as required, for fully finished, functional, and operational structure.
- B. Separate different adjacent materials using non-conductive tape, paint, or other materials that will not be visible upon completion of this work.

PART 3 EXECUTION

3.1 EXAMINATION

- A. Examine substrates, adjacent areas, and conditions, and supporting foundation, with installer present, for compliance with manufacturer's requirements, including installation tolerances and other conditions affecting performance of work.
- B. Examine installed anchor bolts for accuracy and verify that bearing surfaces are ready to receive work.
- C. Examine rough-in of required electrical and mechanical services prior to placement of structure.
- D. Proceed with installation only after unsatisfactory conditions have been corrected.

3.2 PREPARATION

- A. Clean areas of supporting foundation thoroughly before installation.
- B. Prepare substrate surfaces using methods as recommended by manufacturer under project conditions.

3.3 INSTALLATION

- A. Install structure in accordance with manufacturer's written instructions.
- B. Manufacturer shall place structure on foundation.
- C. Contractor shall make final mechanical connections after the building is placed by manufacturer.

- D. Manufacturer shall seal and finish seams between modules.
- E. Set structure plumb and aligned, baseplates level and true to plane with full bearing on concrete substrate and securely fasten to concrete base with indicated anchorage.
- F. Connection to electrical and mechanical systems to be performed by respective sub-contractors.

3.4 ADJUSTING

- A. Adjust doors and hardware to operate smoothly and properly without binding and verify that locks engage accurately and securely without forcing or binding.
- B. Touch-up, repair, or replace damaged products or exposed finishes before Date of Substantial Completion.

3.5 CLEANING

- A. Clean structure in accordance with manufacturer's written instructions.

END OF SECTION

February 9, 2026

TO: Johnson County (Brad)
RE: Kent Park Shower House
Oxford, IA

QUOTATION
WOODMAN BUILDING AUTOMATION SYSTEM

\$\$\$\$.00 (\$\$\$\$ Dollars)

Included Items:

- **VHP-1 including:**
 - Controller.
 - Enclosure.
 - Supply Fan start/stop, status, and speed.
 - Exhaust Fan start/stop, status, and speed.
 - Heat pump reversing valve and compressor enable. (Valve provided with equipment)
 - Hot gas reheat enable.
 - Supply/outside air reheat coil start/stop and status.
 - Outside/Exhaust/Bypass damper actuators. (Dampers provided with equipment)
 - Filter differential pressure sensors.
 - Temperature and humidity sensors per plans and specs.
- **Geothermal Pump Plant including:**
 - Controller.
 - Enclosure.
 - (1) 2" 3-way control valve. (Installed by Mechanical)
 - Pumps 1&2 start/stop and status.
 - Pumps 1&2 VFD start/stop and speed. (VFDs provided by Electrician per schedule)
 - Supply/return water temperature sensors.
 - Water flow switch.
- **Front Network Manager including:**
 - Connect to existing Woodman Controls front end via network connection.
 - Note: IP addresses will need to be provided by Johnson County for connections.
- **Woodman Controls Labor including:**
 - Engineered drawings, wiring diagrams, sequence of operation, and submittal info.
 - Software programming.
 - Installation.
 - Certified technician start-up and commissioning.
 - Owner Training.
 - One year warranty.

Items Not Included:

- Control dampers. (Provided with equipment)
- VFDs. (Provided by Electrical)

We acknowledge Addenda 1.

Note: Sales tax not included.

Note: This quote is good for 30 days.

Thank you,



Eric Moberg
515-269-7407
emoberg@woodmaninc.com

ACCEPTED BY:

PURCHASE ORDER #
