

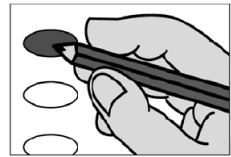
Official's Initials: \_\_\_\_\_

Official Ballot  
**2022 Mid-Prairie Community  
School District Special Election**  
March 01, 2022  
County of Johnson, State of Iowa



**MP**

- 1. Voting Mark.** To vote, completely fill in the oval next to your choice.
- 2. Use only a black ballpoint pen to mark your ballot.**
- 3. Do not cross out.** If you change your mind, exchange your ballot for a new one.
- 4. Notice to Voters.** To vote to approve a question on this ballot, completely fill in the oval in front of the word "Yes". To vote against a question, completely fill in the oval in front of the word "No".



**PUBLIC MEASURES**

**A**

**Shall the following public measure be adopted?**

Shall the Board of Directors of the Mid-Prairie Community School District in the Counties of Iowa, Washington, and Johnson, State of Iowa, be authorized to contract indebtedness and issue General Obligation Bonds in an amount not to exceed \$26,300,000 to provide funds to be used together with sales tax bond proceeds to provide funds to build, furnish and equip additions to existing school facilities, including classrooms, a high school auditorium, a middle school gym and locker rooms, including related site improvements; to remodel, repair, and improve existing facilities, including improvements to parking lots; to build, furnish and equip athletic facilities, including a wrestling and weight room addition to the indoor practice facility; and to remodel, repair, and improve existing athletic facilities, including the high school track and lighting at the softball complex?

- YES
- NO

**B**

**Shall the following public measure be adopted?**

Shall the Board of Directors of the Mid-Prairie Community School District in the Counties of Iowa, Washington, and Johnson, State of Iowa, be authorized to levy annually a tax exceeding Two Dollars and Seventy Cents (\$2.70) per Thousand Dollars (\$1,000), but not exceeding Four Dollars and Five Cents (\$4.05) per Thousand Dollars (\$1,000) of the assessed value of the taxable property within said school corporation to pay the principal of and interest on bonded indebtedness of said school corporation, it being understood that the approval of this proposition shall not limit the source of payment of the bonds and interest, but shall only operate to restrict the amount of bonds which may be issued?

- YES
- NO

**SAMPLE**