

Secondary Roads Department

Iowa DOT County Five-Year Program (CFYP)
& Maintenance Rehabilitation Program (MRP)
Calendar 2024-2028 (Fiscal 2025-2029)



ADOPTED
2024.03.21



JOHNSON COUNTY'S SECONDARY ROADS SYSTEM

(Data based on 2022 IADOT published values)

- **Roads**

- The department is responsible for roughly 914 total miles of Secondary Roads
- Broken down by surface type:

Dirt	Gravel	Bituminous/Chipseal	Asphalt (HMA)	Concrete (PCC)
41	569	126	129	47

- We maintain approximately 314 economically crucial Farm-to-Market road miles
- Roads are designed to last 30-40 years between total reconstructions
- We manage over 1800 miles of roadside vegetation and ditches
- Maintenance and rehabilitation projects hold things together between reconstructions
 - Overlays
 - Mill and fill
 - Patching
 - Crack sealing



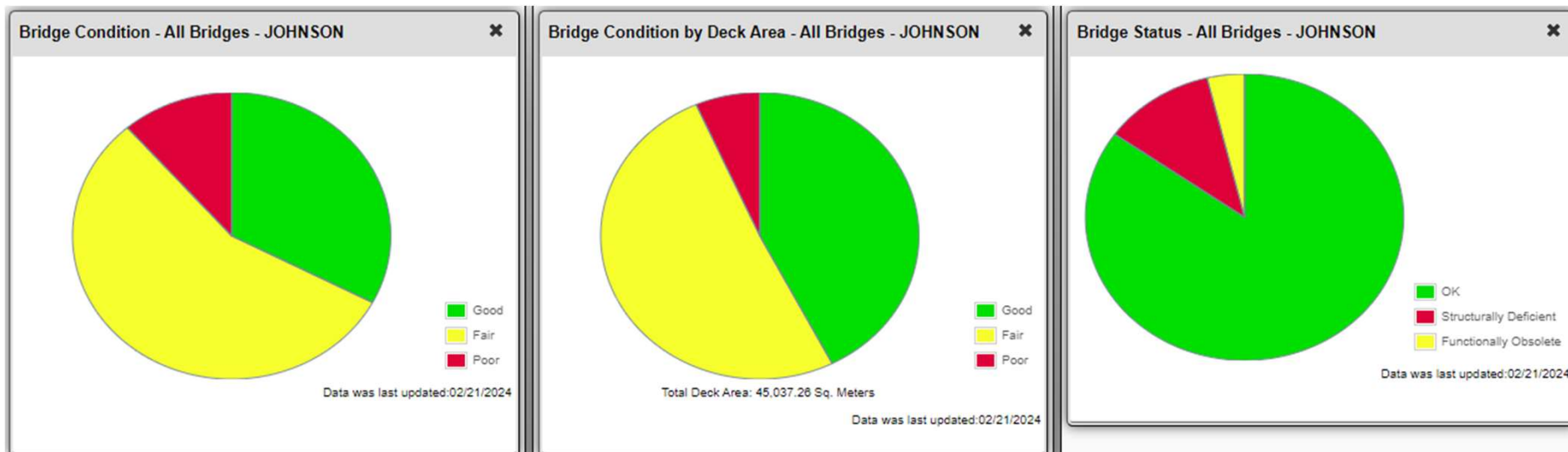
JOHNSON COUNTY'S SECONDARY ROADS SYSTEM

(Data based on 2023 SIIMS data)

- **Bridges**

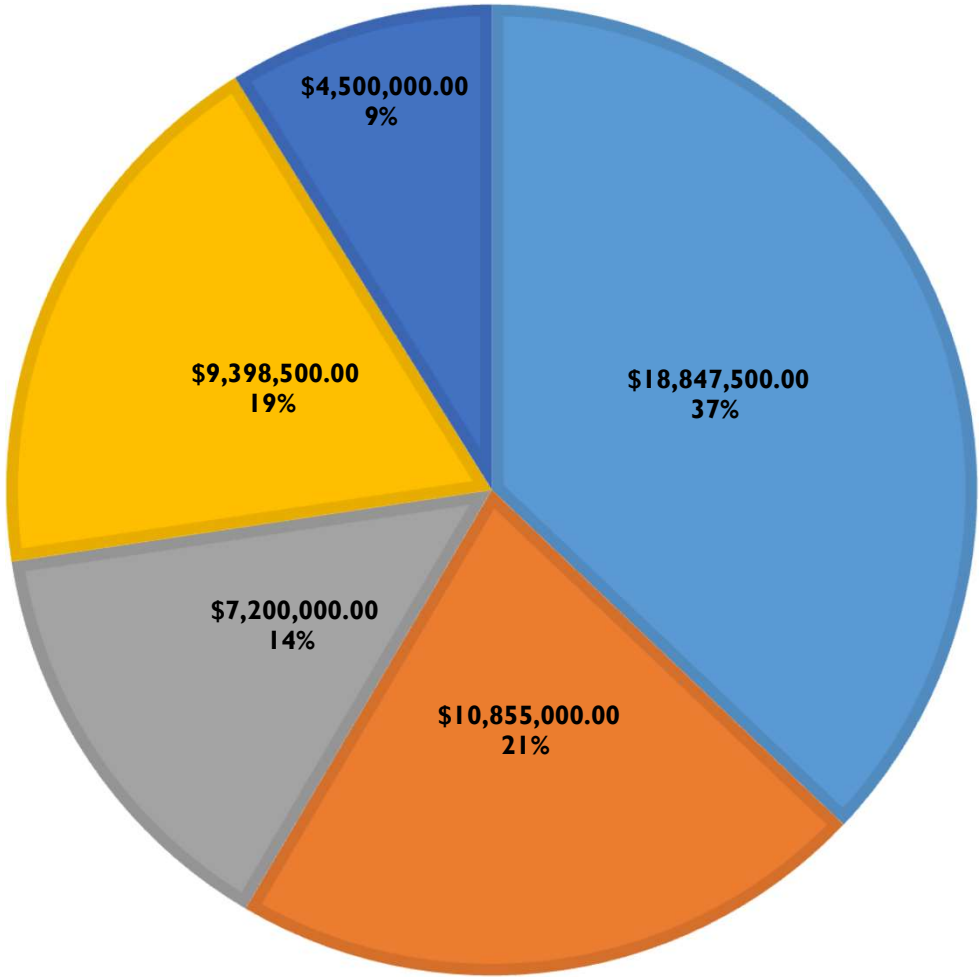
- We monitor 211 Bridges/Culverts longer than 20 feet included in the NBIS
- All bridges ≥ 20 feet in length are required to be inspected at no less than 24 month intervals
- Of those 211 NBIS structures:
 - 22 bridges are structurally deficient (SD)
 - 8 are functionally obsolete (FO)
 - Only 2 fracture critical (FC) bridges remain on our system.
- We are aggressively replacing and repairing deficient bridges as part of this CFYP
- Johnson County bridges rank very well compared with most in Iowa, although Iowa struggles with a low ranking nationwide due to the sheer number of bridges on the system
- Bridges are designed to last 50 years or more – although many of our bridges are centenarians

- **Thousands(!) of cross-road and driveway culverts < 20 feet**



CFYP CONSTRUCTION

(Expenditures* By Calendar Year – 2024-2028)



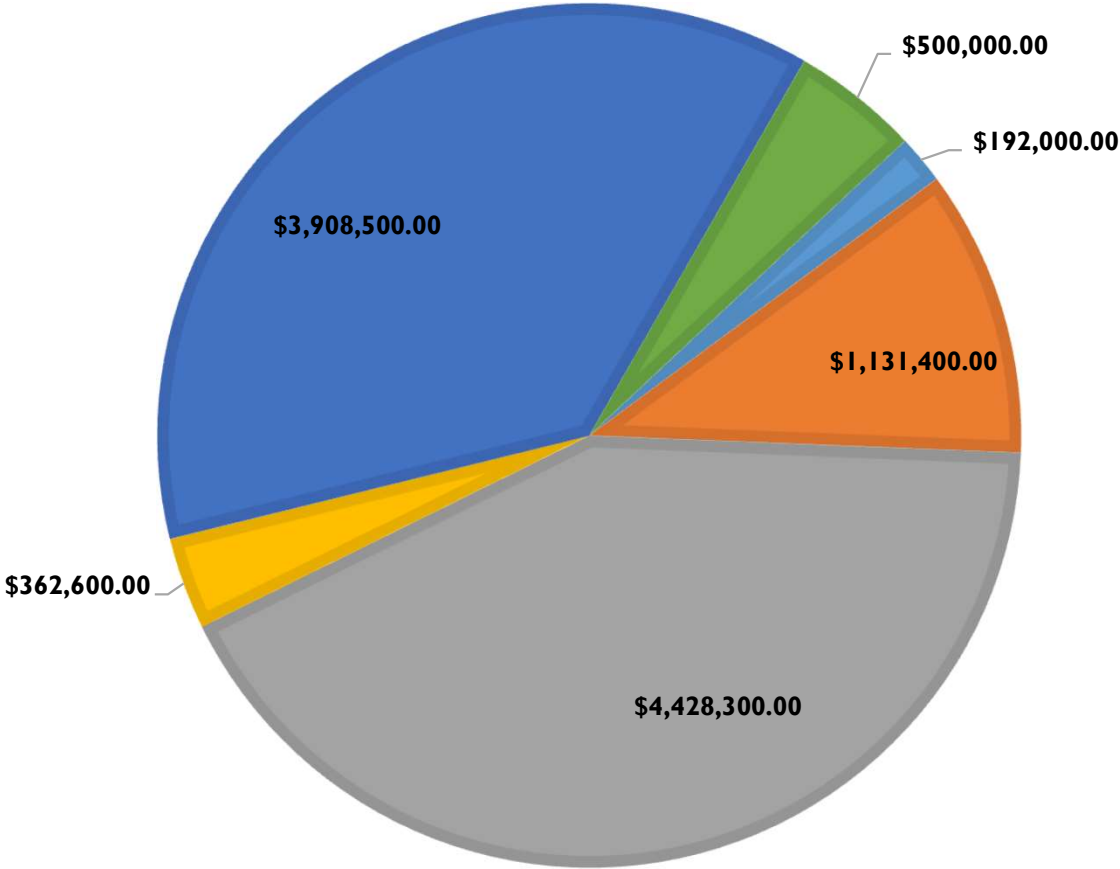
■ 2024 ■ 2025 ■ 2026 ■ 2027 ■ 2028

*(Less Developer/Partner/Special Bond funds)



CFYP CONSTRUCTION

(Revenue/Expenditures - Average Values Per Year – All Sources - Calendar 2024-2028)



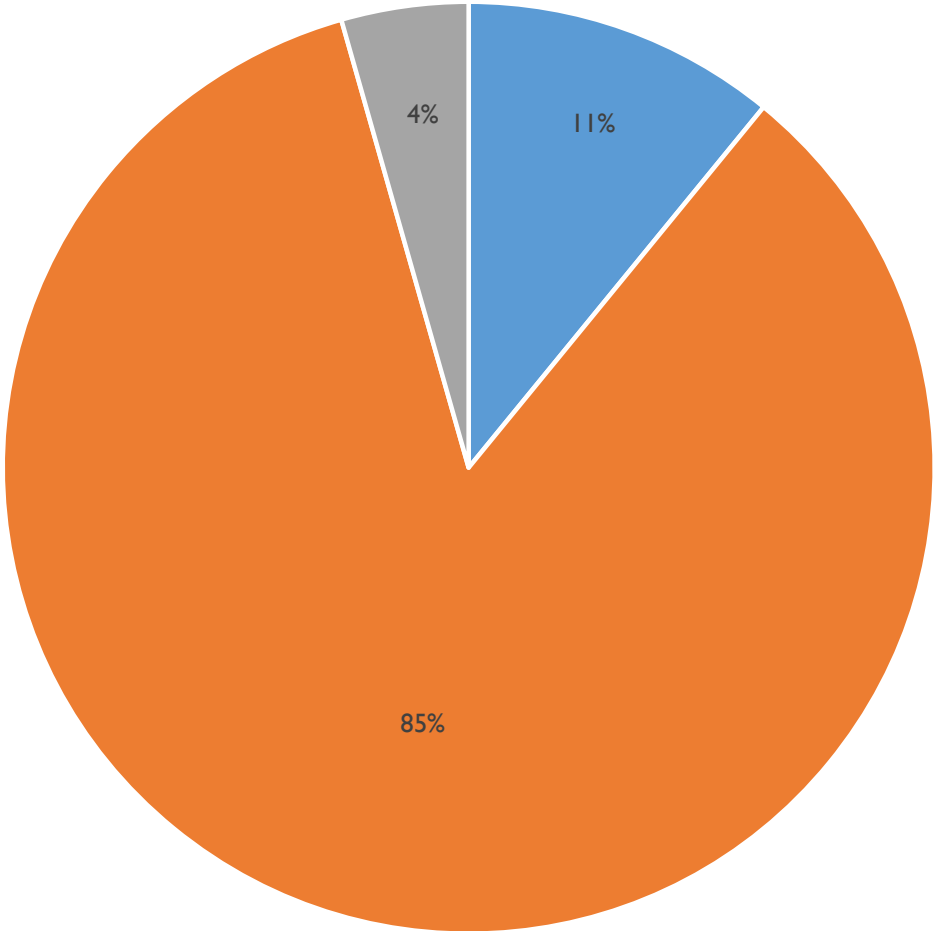
■ Federal Aid (Bridge) ■ Federal Aid ■ State (FM) ■ Dev/Partners/Special Bond ■ Local (County) ■ County Bond*

*- County Bond Funding is subject to Iowa legislature and BOS approval



CFYP CONSTRUCTION

(Expenditures by Project Type Calendar 2024-2028)



■ Bridges/Culverts ■ Paved Roads ■ Gravel Roads/MRP



Making a difference – Completed Project Type Examples

● **JOHNSON COUNTY**
SECONDARY ROADS CFYP



COSGROVE ROAD BRIDGE – O-25-1

Bridge Replacement - Proj.# LFM-O-25-1--7X-52

- On Cosgrove Road over North Branch of Old Man's Creek ~ \$1.25M
- Load limited bridge replaced with 150'-0" x 30' CCS bridge
- Fast tracked due to deterioration of old structure that was faster than anticipated
- Bridge elevation will allow for a future road project to raise the road going north, to prevent water overtopping the road



F44 (HERBERT HOOVER HIGHWAY) - ROUNDABOUT

Full Reconstruction – Grade & Pave - Proj.# LFM-HHH-RAB--7X-52

- From 900 ft. West of Johnson Cedar Road to 600 ft. East of Johnson Cedar Road
~ \$1.7M Total (\$780k Johnson County Bond, \$920k West Branch)
- Joint project with City of West Branch



UTAH AVE SE BRIDGE – T-33-I

Bridge Replacement – Proj.# L-T-33-I--73-52

- Over Buck Creek ~ \$760k
- Load limited bridge replaced with 50'-0" x 30'-6" CCS bridge



F20 (AMANA ROAD)

Grade, Macadam Base, and Granular Surface – Proj.# LFM-AMANA—7X-52

- From Greencastle Ave to 0.1 mi. West of Cou Falls Road ~ \$2.0M
- 16 acre wetland built for mitigation from borrow site
- Raised road profile over 10' at largest fill to reduce closures due to flooding
- Can now be seal coated



JAMES AVENUE SW BRIDGE – Q-22-2

Bridge Replacement – Proj.# L-Q-22-2--73-52

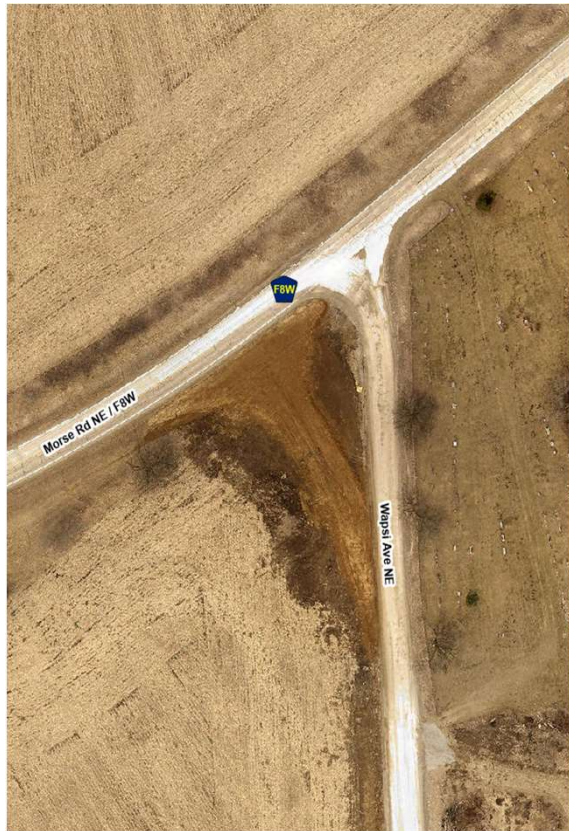
- Over a branch of Rapid Creek ~ \$320k
- Load limited bridge replaced with 23'-9" x 24'-6" Laminated Timber bridge
- From road closure to re-opening, 7 weeks



WAPSI AVE AND MORSE RD/WAPSI INTERSECTION

Grade, Macadam Stone Base, Choke Stone Surface, Double Seal Coat – Proj.# M23-3

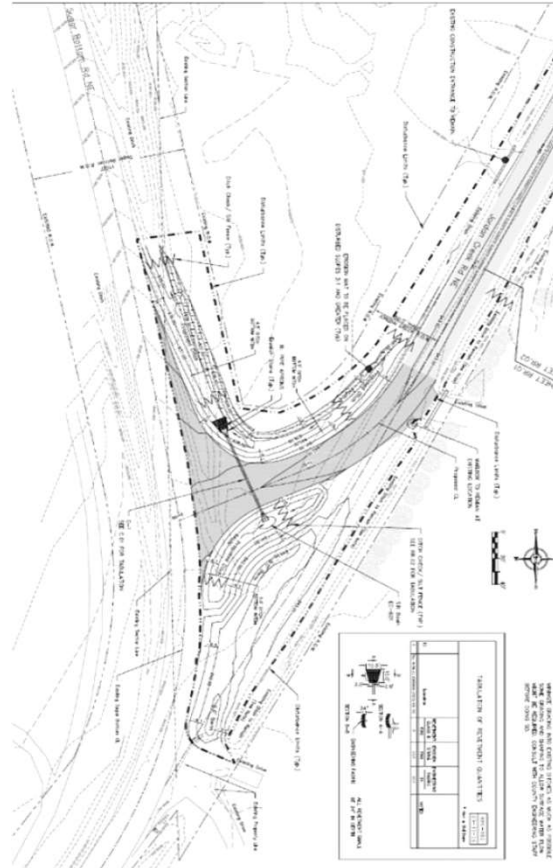
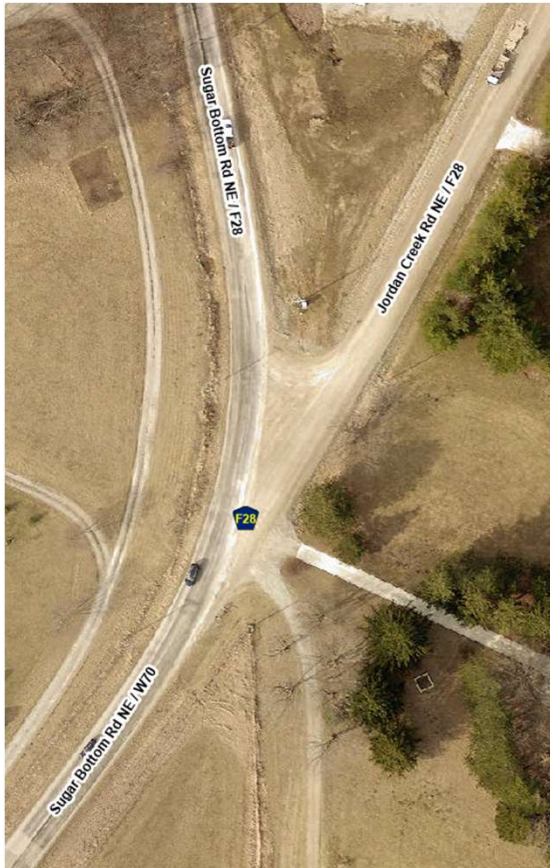
- From Morse Road to 700 feet south of 280th St.
- New alignment provides better sight distance at intersection
- Wider to better accommodate turning truck traffic
- HMA pavement intersection return



F28 (JORDAN CREEK ROAD)/ SUGAR BOTTOM RD INTERSECTION

Regrade and Rock Surface – Proj.# M23-1

- From Sugar Bottom Rd to 940 feet north
- New alignment provides better sight distance at intersection
- Chip seal intersection return



FUTURE PRIORITIES

(Subject to change - Listed alphabetically)

I 40th Street Culvert just West of Ely Road

250th (Penn) Street/Echo Avenue Grade for Pave

500th Street from Naples Avenue to Oak Crest Hill Road

Amana Road stabilized macadam base from Greencastle to Iowa County

Black Diamond Road - Iowa County to HWY I

Dubuque Street from I-80 to North Liberty

High Volume Chipseal Transition Plan

~~IWV Road from Blackhawk to Cosgrove~~

Rapid Creek Road from HWY I to Wapsi

Sandy Beach Road from Curtis Bridge Road to Mohawk Road

~~Utah Avenue from HWY 6 to 520th Street~~



THANK-YOU'S

- The Johnson County Board of Supervisors
 - Prioritize infrastructure improvement
 - Support Secondary Roads mission
 - Invest through bonding and sustained local contribution
- Our Technicians & Apprentice
 - Tim Dunton
 - Adam Finken
 - Adam Gebhart
 - Cale Lehman
 - Blake Oleson
- Our Maintenance Staff
 - Get it done under extreme conditions
 - Hold it all together
- Residents of Johnson County
 - Take an active part
 - Care about this community
 - Willing to invest in it

“The Johnson County Secondary Road Department’s purpose is to enhance and maintain the County’s road system. The department is committed to providing the citizens of Johnson County, and all who use our roads and trails, superior infrastructure and maintenance that improves mobility and a commitment to environmental and economic accountability. Departmental activities strive to meet and most often exceed expectations in the most efficient, effective, and responsible manner.”



QUESTIONS?

