

Secondary Roads Department

Iowa DOT County Five-Year Program (CFYP)
& Maintenance Rehabilitation Program (MRP)
Calendar 2025-2029 (Fiscal 2026-2030)



DRAFT
2025.02.19



JOHNSON COUNTY'S SECONDARY ROADS SYSTEM

(Data based on 2023 IADOT published values)

- **Roads**

- The department is responsible for roughly 913 total miles of Secondary Roads
- Broken down by surface type:

| Dirt | Gravel | Bituminous/Chipseal | Asphalt (HMA) | Concrete (PCC) |
|------|--------|---------------------|---------------|----------------|
| 40 | 567 | 130 | 127 | 46 |

- We maintain approximately 314 economically crucial Farm-to-Market road miles
- Roads are designed to last 30-40 years between total reconstructions
- We manage over 1800 miles of roadside vegetation and ditches
- Maintenance and rehabilitation projects hold things together between reconstructions
 - Overlays
 - Mill and fill
 - Cold-in-place recycling
 - Patching
 - Crack sealing



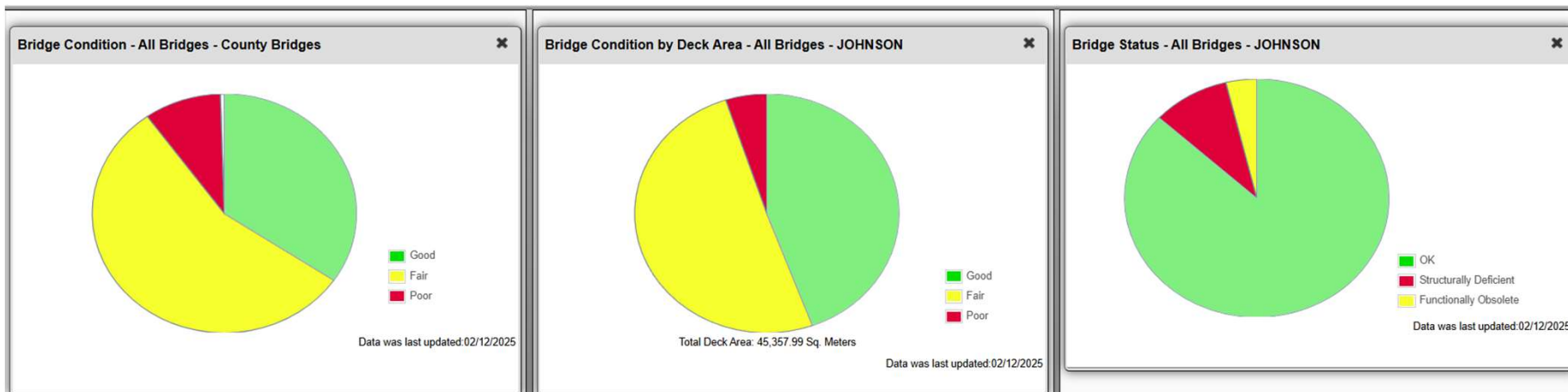
JOHNSON COUNTY'S SECONDARY ROADS SYSTEM

(Data based on 2024 SIIMS data)

- **Bridges**

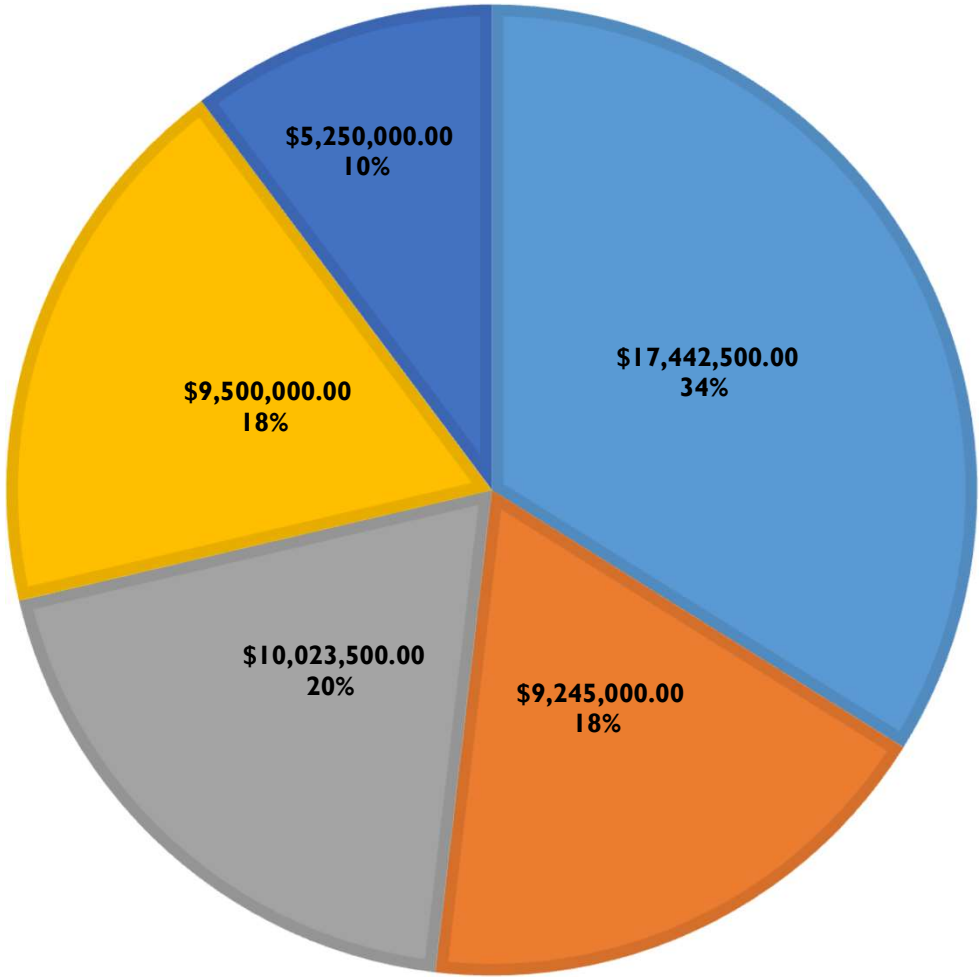
- We monitor 212 Bridges/Culverts longer than 20 feet included in the NBIS
- All bridges ≥ 20 feet in length are required to be inspected at no less than 24 month intervals
- Of those 212 NBIS structures:
 - 20 bridges are structurally deficient (SD)
 - 8 are functionally obsolete (FO)
 - Only 2 fracture critical (FC) bridges remain on our system.
- We are aggressively replacing and repairing deficient bridges as part of this CFYP
- Johnson County bridges rank very well compared with most in Iowa, although Iowa struggles with a low ranking nationwide due to the sheer number of bridges on the system
- Bridges are designed to last 50 years or more – although many of our bridges are centenarians

- **Thousands(!) of cross-road and driveway culverts < 20 feet**



CFYP CONSTRUCTION

(Expenditures* By Calendar Year – 2025-2029)



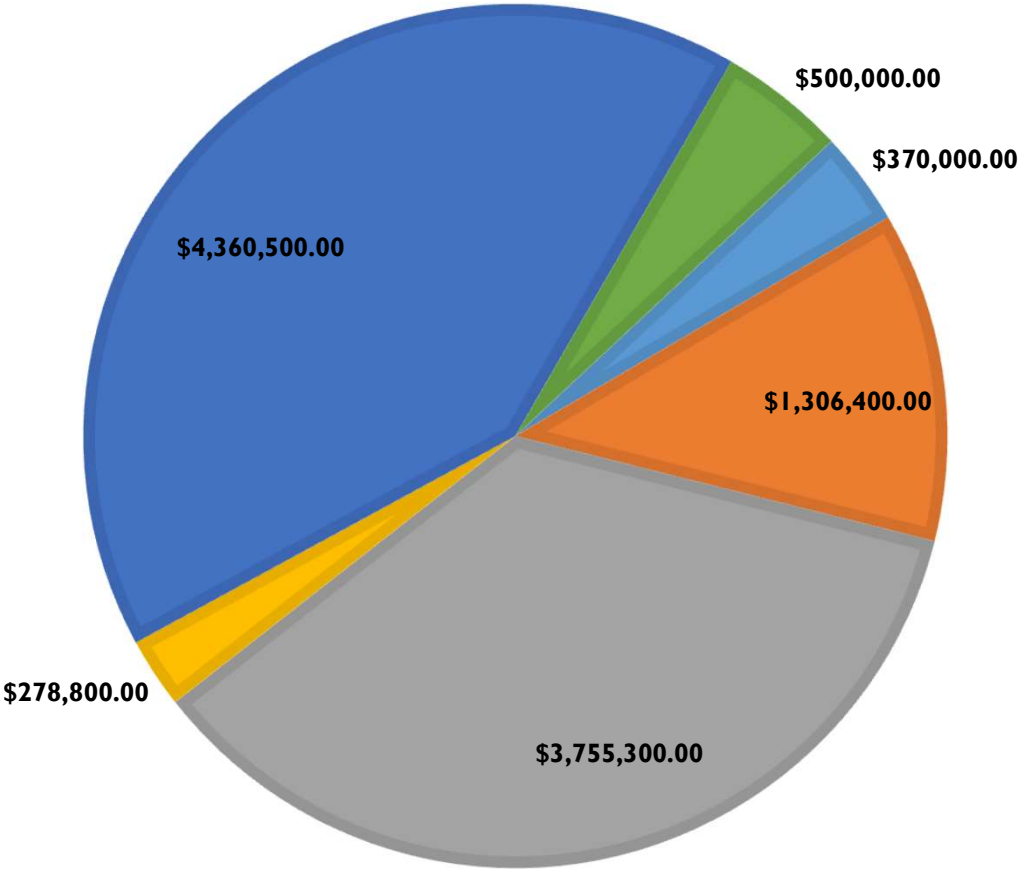
■ 2025 ■ 2026 ■ 2027 ■ 2028 ■ 2029

*(Less Developer/Partner/Special Bond funds)



CFYP CONSTRUCTION

(Revenue/Expenditures - Average Values Per Year – All Sources - Calendar 2025-2029)



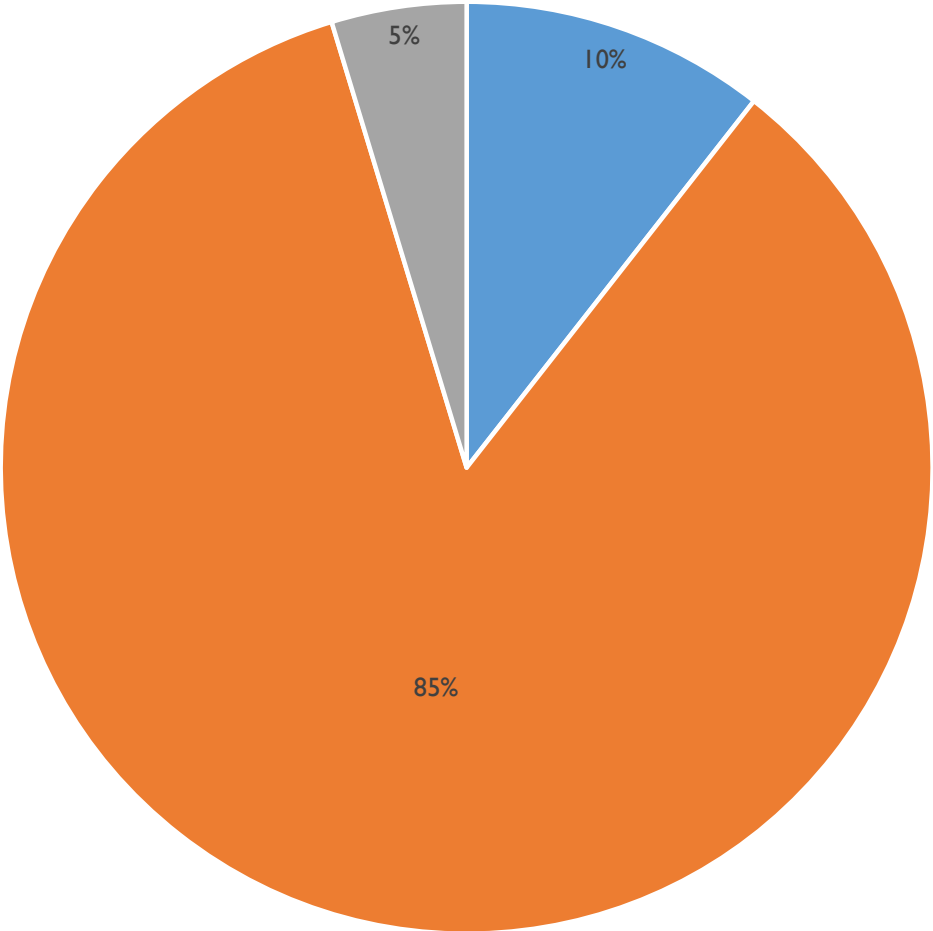
■ Federal Aid (Bridge) ■ Federal Aid ■ State (FM) ■ Dev/Partners/Special Bond ■ Local (County) ■ County Bond*

*- County Bond Funding is subject to Iowa legislature and BOS approval



CFYP CONSTRUCTION

(Expenditures by Project Type Calendar 2025-2029)



■ Bridges/Culverts ■ Paved Roads ■ Gravel Roads/MRP



Making a difference – Completed Project Type Examples

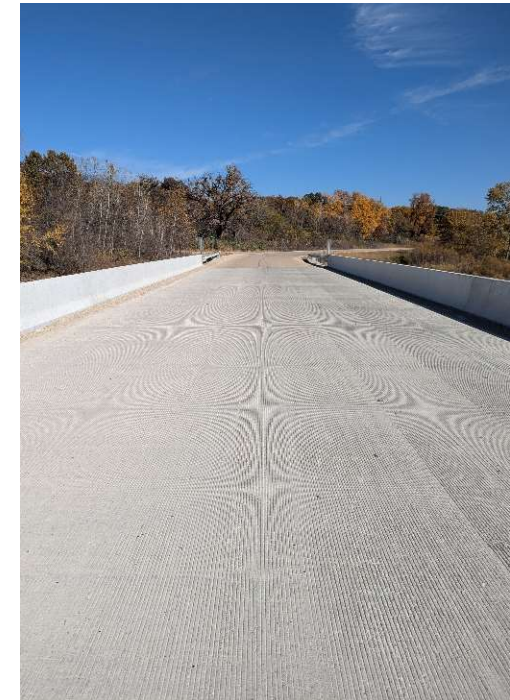
● **JOHNSON COUNTY**
SECONDARY ROADS CFYP



AMANA ROAD BRIDGE – C-21-5

Bridge Replacement - Proj.# BRS-C052(128)—60-52

- On Amana Road over a Branch of the Iowa River ~ \$950k
- Load limited bridge replaced with 110'-0" x 30' PPCB bridge
- New bridge eliminated pier, improving hydraulic conditions
- Raised road and bridge to reduce chance of closure due to flooding



540TH ST SW

Full Reconstruction – Grade & Pave - Proj.# LFM-540th--7X-52

- From Highway I to Gable Ave SW ~ \$875k
- Chipseal road upgraded to HMA
- Coordination with local businesses to reduce impact to their customers



NAPLES AVE SW BRIDGE – R-32-I

Bridge Replacement – Proj.# L-R-32-I--7X-52

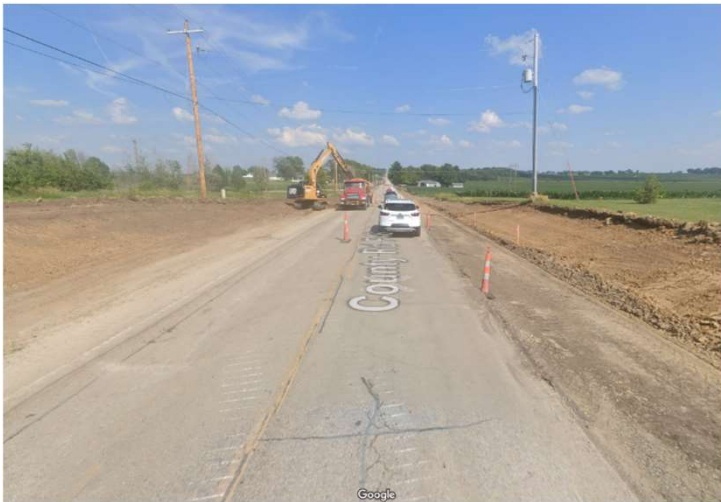
- Over Crooked Creek ~ \$320k
- Load limited bridge replaced with 24'-0" x 24'-6" Laminated Timber bridge



F46 (AMERICAN LEGION ROAD)

Pavement Rehabilitation – Proj.# FM-C052(I25)--55-52

- From Taft Ave to Highway 6 ~ \$4.8M
- 3R project (Pavement Rehabilitation) used existing road base
- Constructed while road open to traffic



SHARON CENTER RD SW BOX CULVERT – M-25-2

Box Culvert Replacement – Proj.# LFM-M-25-2--7X-52

- On unnamed creek ~ \$290k
- Headwall deterioration required lane closure, then full closure of road
- Accelerated schedule to reopen the road



F28 (WEST PENN STREET)

Reconstruction – Proj.# LFM-Penn--7X-52

- From North Liberty limits to James Ave ~ \$950k
- Joint project with City of North Liberty
- Upgraded from chipseal to PCC pavement



F20 AMANA ROAD

Double Seal Coat – Proj.# M26-2

- From Cou Falls Rd to Greencastle Ave
- Chipseal upgrade placed over reconstructed granular surface
- Will no longer need annual CaCl dust alleviation



FUTURE PRIORITIES

(Subject to change - Listed alphabetically)

I 40th Street Culvert just West of Ely Road

250th (Penn) Street/Echo Avenue Grade for Pave

~~500th Street from Naples Avenue to Oak Crest Hill Road~~

Amana Road stabilized macadam base from Greencastle to Iowa County

Black Diamond Road - Iowa County to HWY I

Dubuque Street from I-80 to North Liberty

High Volume Chipseal Transition Plan

IWV Road from Blackhawk to Cosgrove

Rapid Creek Road from HWY I to Wapsi

Sandy Beach Road from Curtis Bridge Road to Mohawk Road

~~Utah Avenue from HWY 6 to 520th Street~~

~~Quincy Road Chipseal from Newport Road to Jordan Creek Road~~

~~Sand Road from 520th Street to HWY 22~~



THANK-YOU'S

- The Johnson County Board of Supervisors
 - Prioritize infrastructure improvement
 - Support Secondary Roads mission
 - Invest through sustained local contribution
- Our Technicians & Apprentice
 - Tim Dunton
 - Adam Finken
 - Adam Gebhart
 - Cale Lehman
 - Blake Oleson
- Our Maintenance Staff
 - Get it done under extreme conditions
 - Hold it all together
- County Attorney
 - David VanCompernelle
 - Ryan Maas
- Residents of Johnson County
 - Take an active part
 - Care about this community
 - Willing to invest in it

“The Johnson County Secondary Road Department’s purpose is to enhance and maintain the County’s road system. The department is committed to providing the citizens of Johnson County, and all who use our roads and trails, superior infrastructure and maintenance that improves mobility and a commitment to environmental and economic accountability. Departmental activities strive to meet and most often exceed expectations in the most efficient, effective, and responsible manner.”



QUESTIONS?

